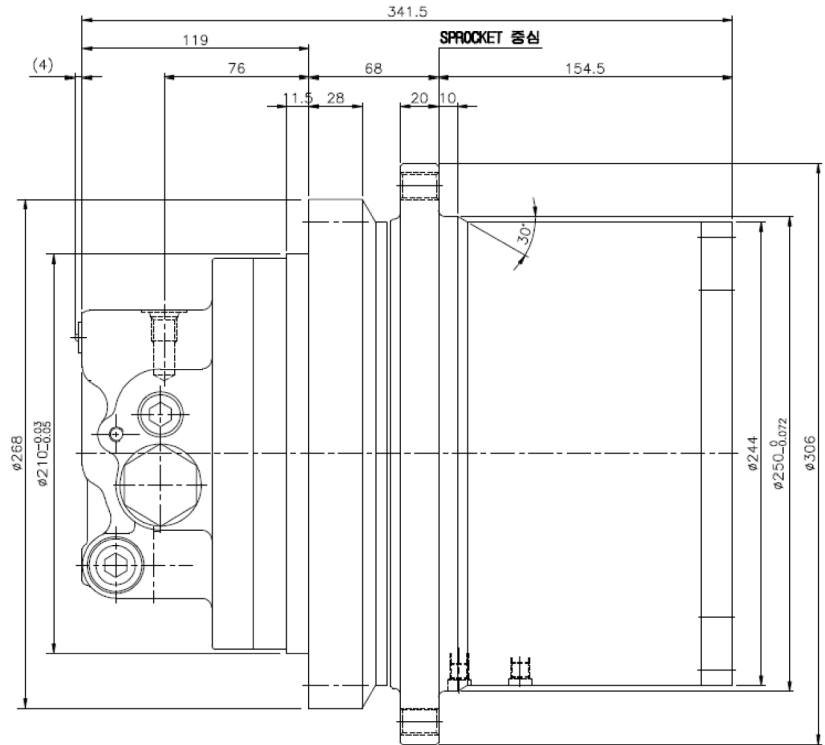
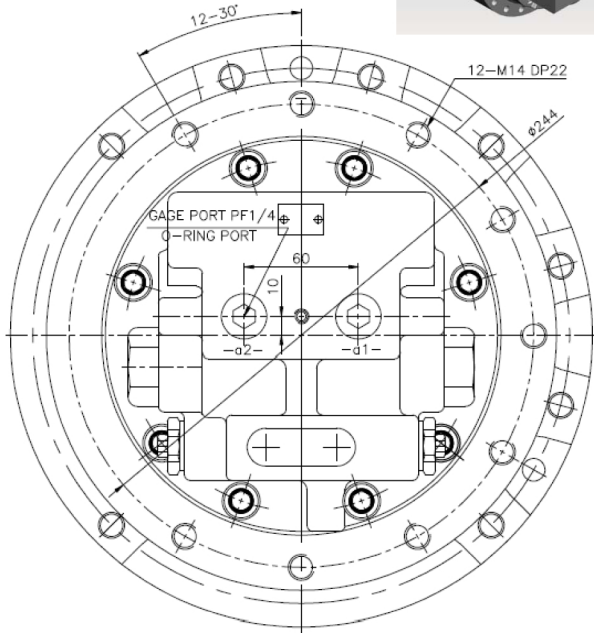
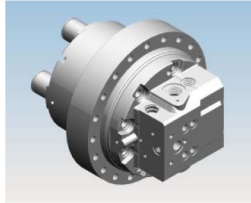


HYD.MOTOR - TRAVEL & SWING

1. TRAVEL – 05 , 14, 22, & 30 Ton Class
2. SWING – 06, 14, 22, & 30 Ton Class

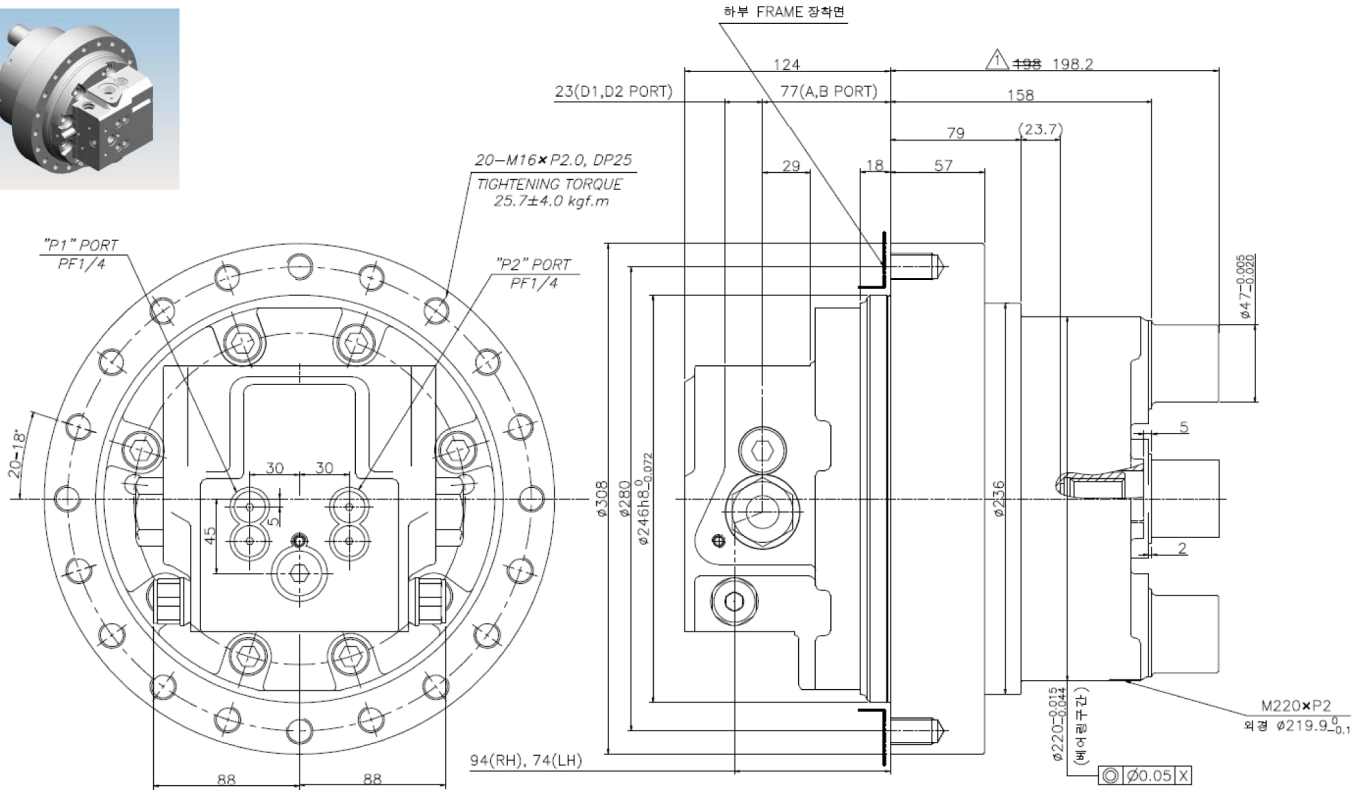
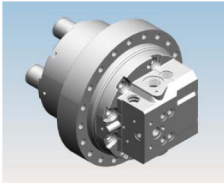
KOTRACK

Hydraulic Motor for Traveling(05t)



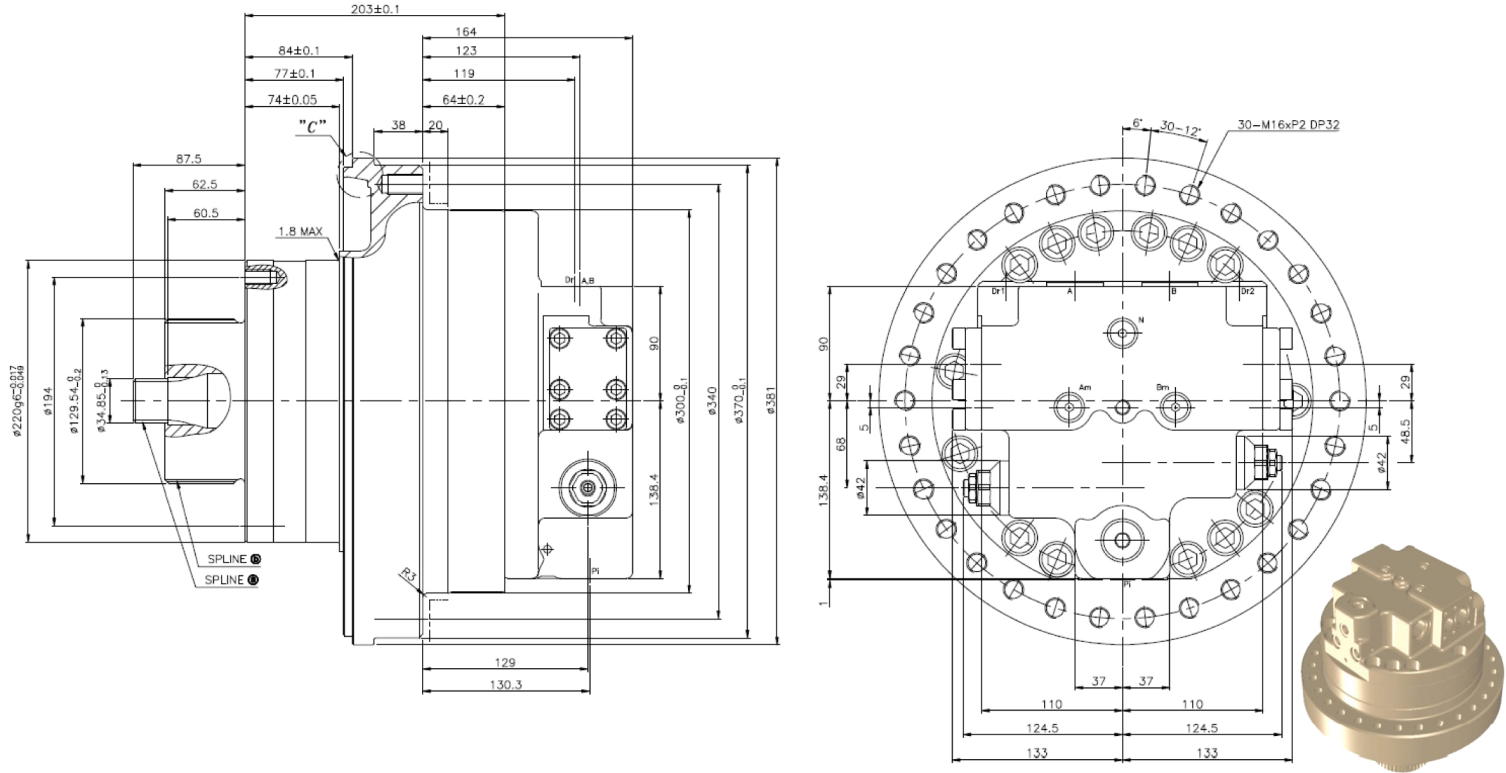
CAPACITY (q1/q2)	RELIEF VALVE SETTING PRESSURE		FLOW RATE	RPM	OUTPUT TORQUE		BRAKE TORQUE		RELEASE PRESSURE OF BRAKE		AUTOMATIC 2 nd STAGE PRESSURE		WEIGHT
	kgf/cm ²	Mpa			kgf/cm ²	Mpa	kgf/cm ²	Mpa	kgf/cm ²	Mpa			
43.3/24.9 cc/rev	220 kgf/cm ²	21.6 Mpa	55.9ℓ /min	1291/2245	16.5/9.5kgfm	161.8/93Nm	8.4 kgfm	82 Nm	9 kgf/cm ²	0.88 Mpa	kgf/cm ²	Mpa	

Hydraulic Motor for Traveling(14t)



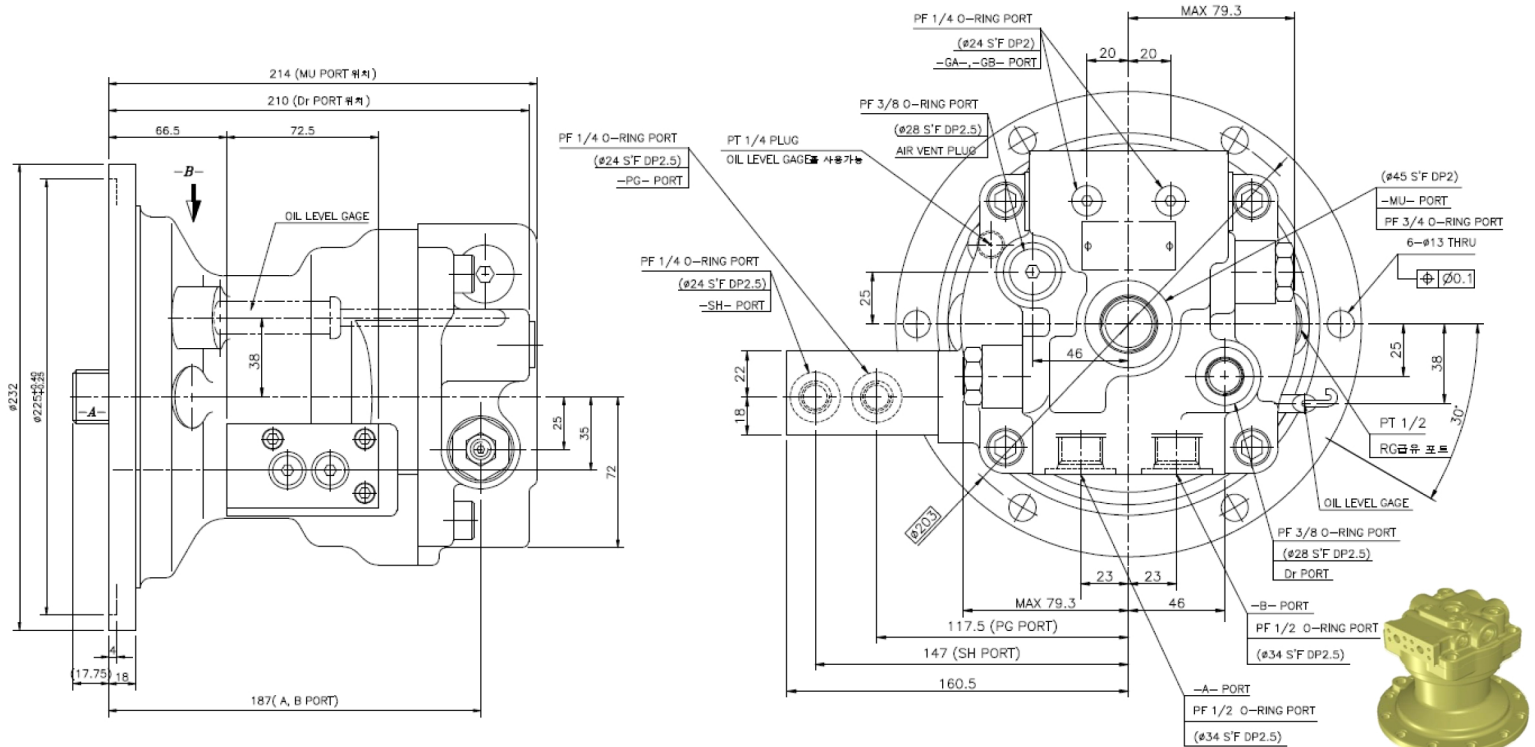
CAPACITY (q1/q2)	RELIEF VALVE SETTING PRESSURE		FLOW RATE	RPM	OUTPUT TORQUE		BRAKE TORQUE		RELEASE PRESSURE OF BRAKE		AUTOMATIC 2 nd STAGE PRESSURE		WEIGHT
80/ 50 cc/rev	330 kgf/cm ²	32.4 Mpa	129 l /min	1612.5/ 2580	42/26.3kgfm	412/258Nm	19.7 kgfm	193 Nm	9.5 kgf/cm ²	0.93 Mpa	280kgf/cm ²	27.5Mpa	

Hydraulic Motor for Traveling(22T)



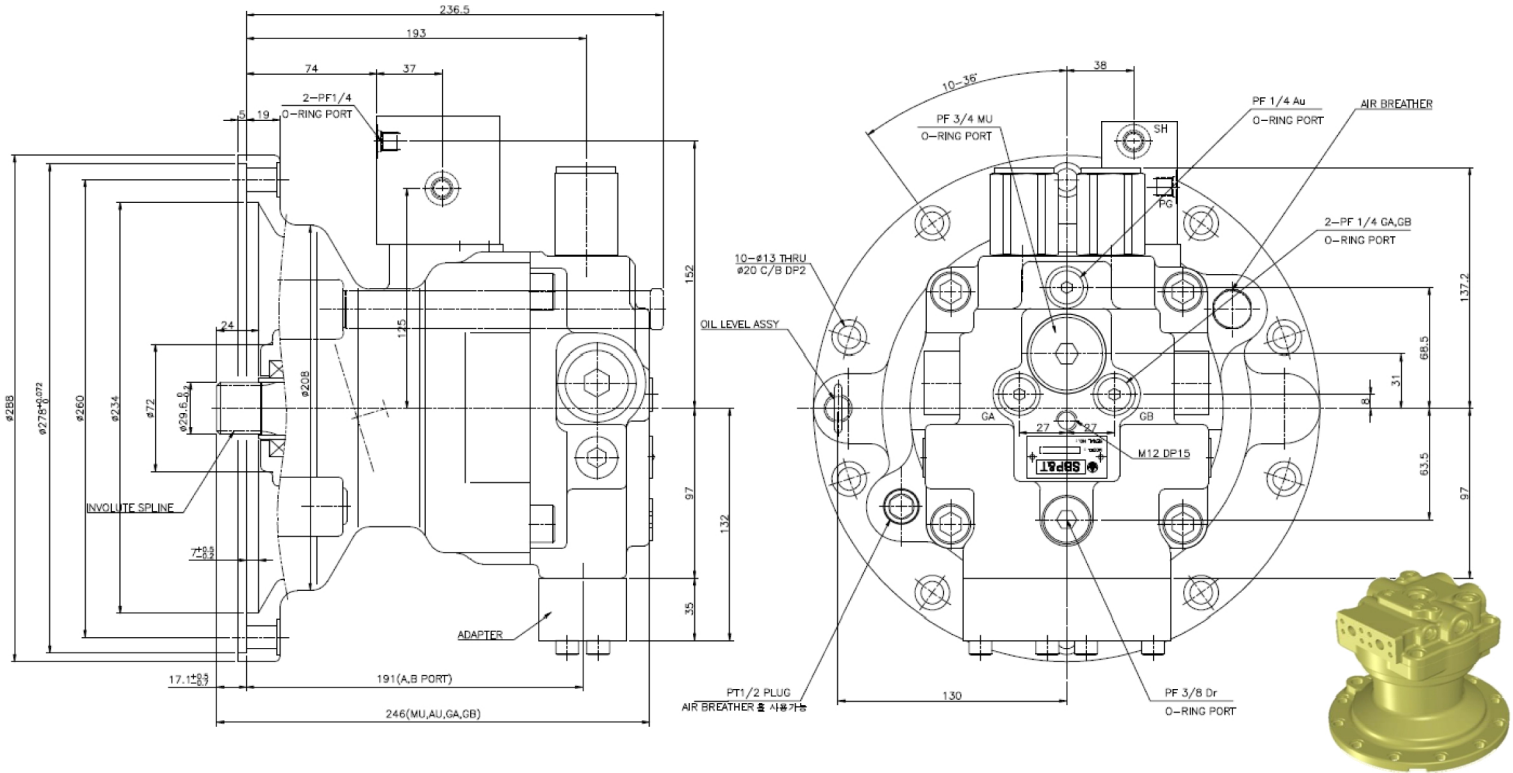
CAPACITY (q1/q2)	RELIEF VALVE SETTING PRESSURE		FLOW RATE	RPM	OUTPUT TORQUE		BRAKE TORQUE		RELEASE PRESSURE OF BRAKE		AUTOMATIC 2 nd STAGE PRESSURE		WEIGHT
	330 kgf/cm ²	32.4 Mpa			74/39 kgfm	725.7/382 Nm	49.01 kgfm	480.6 Nm	11 kgf/cm ²	1.08 Mpa	260 kgf/cm ²	25.5 Mpa	
140.5 / 95.2 cc/rev	330 kgf/cm ²	32.4 Mpa	220 l /min	1,566 / 2311rpm	74/39 kgfm	725.7/382 Nm	49.01 kgfm	480.6 Nm	11 kgf/cm ²	1.08 Mpa	260 kgf/cm ²	25.5 Mpa	

Hydraulic Motor for Swing(06T)



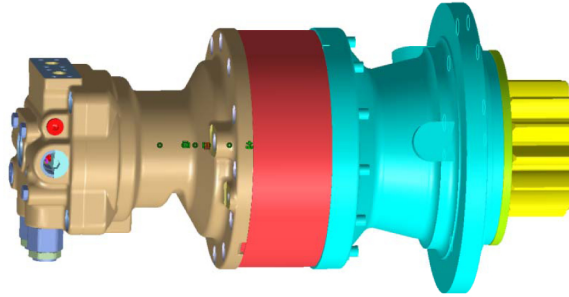
CAPACITY (q1/q2)	RELIEF VALVE SETTING PRESSURE		FLOW RATE	RPM	OUTPUT TORQUE		BRAKE TORQUE		RELEASE PRESSURE OF BRAKE		WEIGHT
43 cc/rev	240 kgf/cm ²	23.5 Mpa	75.6 t /min	1758rpm	16.08kgfm	158 Nm	14 kgfm	137 Nm	25~50 kgf/cm ²	2.4~4.9 Mpa	

Hydraulic Motor for Swing(14T)



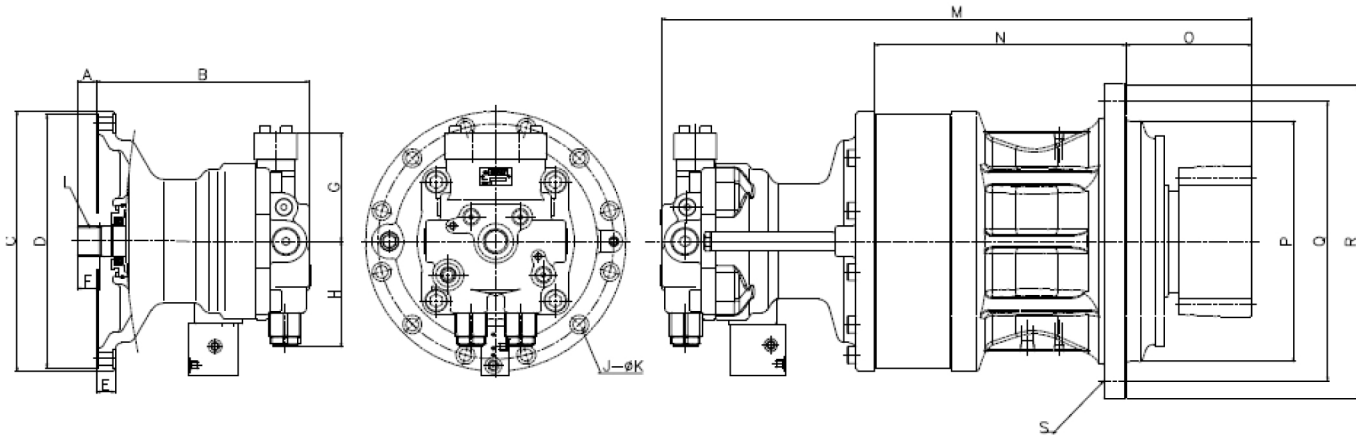
CAPACITY (q1/q2)	RELIEF VALVE SETTING PRESSURE		FLOW RATE	RPM	OUTPUT TORQUE		BRAKE TORQUE		RELEASE PRESSURE OF BRAKE		WEIGHT
64.3cc/rev	240kgf/cm ²	23.5 Mpa	130 ℓ /min	2022 rpm	24.6 kgfm	241 Nm	25 kgfm	245Nm	20~50 kgf/cm ²	2~4.9 Mpa	

Specification



MODEL			Reduction Gear				Hydraulic Motor								
			Gear Ratio	Theoretical Output Torque		Max.Speed	Theoretical Output Torque		Max.Speed	Displacement	Barke Torque		Max.Pressure		Weight
ASS'Y	HYD.MOTOR	R.GEAR	i	Kgf-m	N-m	rpm	Kgf-m	N-m	rpm	cc/rev	kgf-m	N-m	Kgf/cm ²	Mpa	Kgf
SB06CA-MO03-00	SBHSM45-240-01	SB06CA-WA00-00	19.464	313	3069.5	90.3	16.08	158	1758	43	14	137	240	23.5	
SB13CA-MO02-00	SBHSM64-240-01	SB13CA-MO02-00	19.04	468.4	4593	106.2	24.6	241	2022	64.3	25	245	240	23.5	
SB22CA-MO00-00	SBHSM130-250-01	SB22CA-WA00-01	17.64	913.75	8960.8	93.76	51.8	508	1654	130	65.8	645	250	24.5	
SB22CA-MO01-00	SBHSM130250-01	SB22CA-WA02-01	17.64	913.75	8960.8	93.76	51.8	508	1654	130	65.8	645	250	24.5	
SB22CA-MO05-00	SBHSM150-250-01	SB22CA-WA02-01	17.64	1058.4	10379	82.7	60	588	1459	151	65.8	645	250	24.5	
SB22CA-MO06-00	SBHSM150-285-02	SB22CA-WA02-01	17.64	1208	11846	82.7	68.5	672	1459	151	65.8	645	285	27.9	
SB22CA-MO07-00	SBHSM150-260-03	SB22CA-WA04-00	17.64	1076.6	10557.8	82.6	61	598	1457.6	147.5	65.8	645	260	25.5	
SB25CA-MO01-00	SBHSM150-280-04	SB25CA-WA01-00	20.21	1360	13337	73.4	67.3	660	1483	151	65.8	645	280	27.5	
SB30CA-MO02-00	SBHSM170-275-01	SB30CA-WA04-00	24.74	1830.8	17954	66.8	74	726	1653	169.4	71	696	275	27	
SB30CA-MO05-00	SBHSM149-295-01	SB30CA-WA05-00	24.74	1732	16985	60.7	70	686.5	1502	149.13	71	696	295	28.9	

Dimension



MODEL	A	B	C	D	E	F	G	H	I	J - K	M	N	O	P	Q	R	S
Swing 6 ton	17.75	214	Φ232	Φ225	18	24	72	83	DP 16/32, Z=15	6 - Φ13	502.2	194	98.2	Φ200	Φ275	Φ303	7-Φ17
Swing 14 ton	17.1	246	Φ288	Φ278	24	24	132	137.2	m=1.667, Z=16	10 - Φ13	586	234	118	Φ220	Φ290	Φ323	9-Φ18
Swing 22 ton	17	305	Φ340	Φ330	23	27.1	155	151.2	m=2.5, Z=16	12 - Φ18	796	329	162	Φ310	Φ360	Φ410	11-Φ22
Swing 25 ton	27	305	Φ372	Φ362	26.5	31	155	151.2	DP 8/16, Z=15	12 - Φ18	841.8	359	179.2	Φ345	Φ400	Φ450	13-Φ22
Swing 29 ton	18.6	305	Φ386	Φ315	20	27.1	155	151.2	m=2.5, Z=16	12 - Φ19	883.5	396.5	182	Φ380	Φ484	Φ528	14-Φ25