

KOTRACK



CERTIFICATES & AWARDS



ISO 9001

ISO 14001



INTERNATIC TRADE MEM

INNOVATION BUSINESS

R&D CENTER

MILLION DOLLAR
AWARD BY EXPORT



10 MILLION DOLLAR
Certificates & Awards

TEST MACHINE / MEASURING INSTRUMENT



MOTOR-TESTER

EPPI-TESTER

MAIN PUMP TESTER

GEAR PUMP TESTER

REGULATOR TESTER

3D PRECISION MEASURING EQUIPMENT

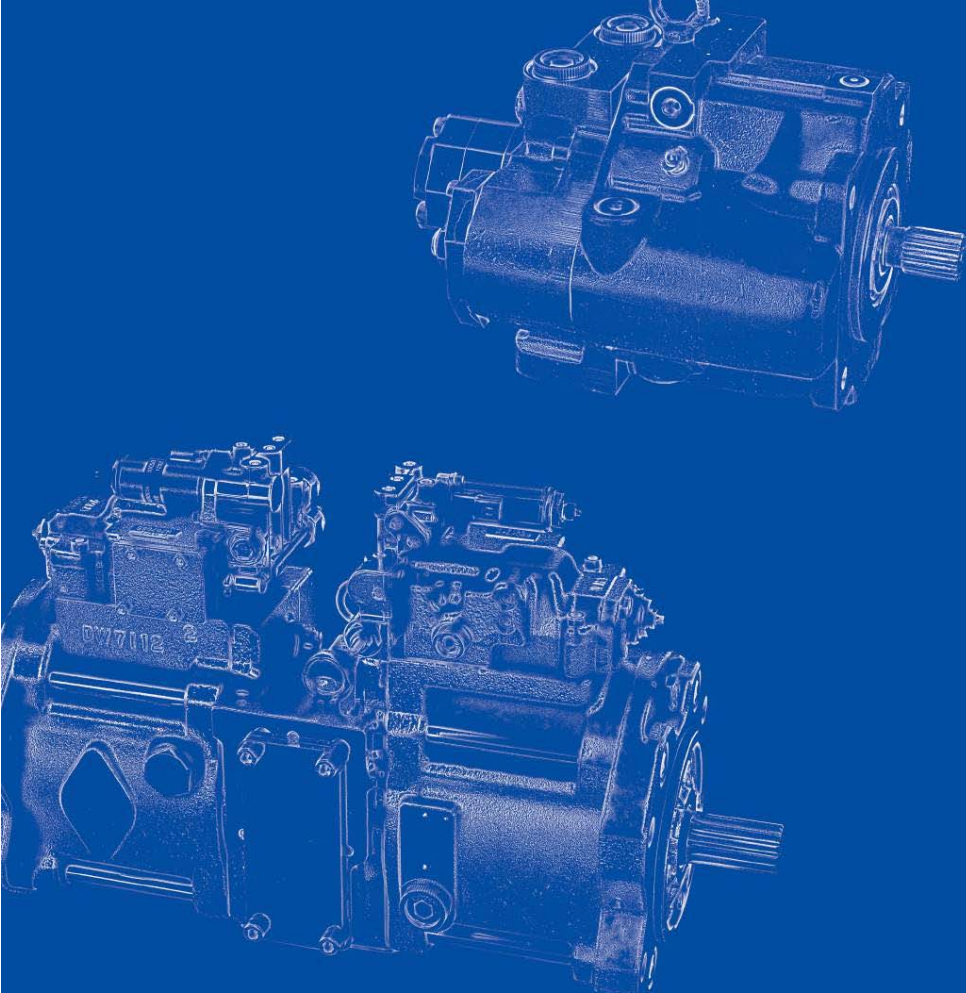
MACHINERY OF PROCESS LINE



CNC

MCT

HOPPING



Contents 목차

- 08 ASSEMBLY
- 38 SPARE PARTS FOR PUMP
- 57 SPARE PARTS FOR TRAVEL
- 66 SPARE PARTS FOR SWING
- 76 GEAR OF HUB AXLE
- 80 GEAR OF SWING MOTOR
- 91 GEAR OF TRAVEL MOTOR
- 97 GEAR PARTS



MAIN PUMP ASS'Y



HT3V63DT	HT3V112DT	HT3V140DT	HT3V180DT	HT5V80DT	
HT3V63DTP	HT3V112DTP	HT3V180DTP	HT3V180DTH	HT5V80DTP	HT5V140DTP
HT5V160DTP	HT5V160DTH	HT5V200DTH	HT7V125DTP	PSVD2-27E	
AP2D21	AP2D25	AP2D28	AP2D36	HPV145	PVD-2B-40

TRAVEL MOTOR ASS'Y



HTM06VN	HTM07VC	HTM09VC	HTM10VC	HTM18VC	HTM40VC
HTMV016	HTMV16	HTMV21	HTMV23		
MAG33	MAG85	ZAXIS200			

SWING MOTOR ASS'Y



M2X150

M5X130

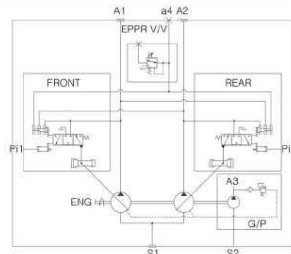
FAN MOTOR



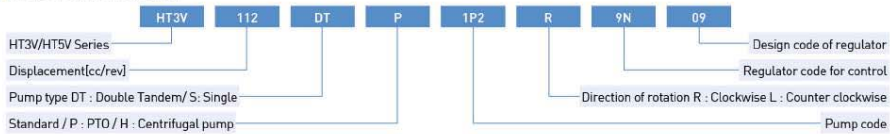
EC460/480

MAIN PUMP ASS'Y

HT3V/HT5V/SK PUMP SERIES



Model Information

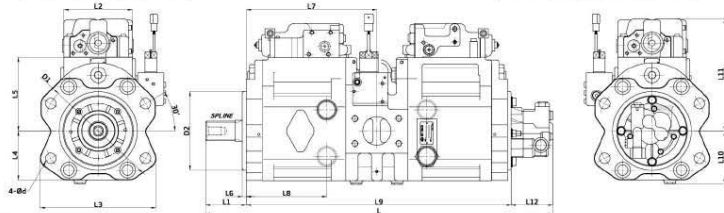


Specification

MODEL	Max. Displacement		Rated Pressure		Max Pressure		Max Self-priming Speed		Max Input Torque		Application ton
	cc/rev	kgf/cm ²	Mpa	kgf/cm ²	Mpa	rpm	Max	kgf·m	N·m		
HT3V43DT	43 * 2	350	34.3	400	39.2	2450	2700	35	343.2	13-17	
HT3V112DT	112 * 2	350	34.3	400	39.2	2340	2700	60	588.4	20-25	
HT3V140DT	140 * 2	350	34.3	400	39.2	2150	2500	114	1118	29-37	
HT3V180DT	180 * 2	350	34.3	400	39.2	1950	2300	114	1118	39-45	
HT5V80DTP	80 * 2	350	34.3	400	39.2	2460	3000	54	529.6	13-17	
HT3V112DTP	112 * 2	350	34.3	400	39.2	2340	2700	60	588.4	20-25	
HT3V180DTP	180 * 2	350	34.3	400	39.2	1950	2300	114	1118	39-45	
HT5V140DTP	140 * 2	350	34.3	400	39.2	2160	2500	86	843.4	29-37	
HT3V180DTH	180 * 2	350	34.3	400	39.2	1950	2300	114	1118	39-45	

Suction port	a	b	c	e-Thread
HT3V43DT	50.8	88.9	60	M12
HT3V112DT	50.8	88.9	60	M12
HT3V140DT	61.9	106.4	76	M16
HT3V180DT	61.9	106.4	76	M16
K5V80DTP	50.8	88.9	60	M12
HT3V112DTP	50.8	88.9	60	M12
HT3V180DTH	61.9	106.4	76	M16
HT5V140DTP	61.9	106.4	76	M16

Delivery port	a	b	c	d	e-Thread
HT3V43DT	23.8	50.8	19	31	M10
HT3V112DT	23.8	50.8	19	31	M10
HT3V140DT	27.8	57.2	25	37.5	M12
HT3V180DT	27.8	57.2	25	37.5	M12
K5V80DTP	23.8	50.8	19	31	M10
HT3V112DTP	27.8	57.2	25	37.5	M12
HT3V180DTH	27.8	57.2	25	37.5	M12
HT5V140DTP	27.8	57.2	25	37.5	M12



Dimensions

MODEL	D1	D2	d	L1	L2	L3	L4	L5	L6	L7	L8	L9	L10	L11	L	SPLINE
HT3V43DT	180	125	18	76	123	190	89	125	8	228	138	464	195	79	619	Ø31.2 × 14T
HT3V112DT	224	160	22	78	123	234	100	150	8	265	167	538	220	78	694	Ø39.5 × 14T
HT3V140DT	250	180	22	93	123	256	112	175	8	305	190	618	245	80	791	Ø47 × 17T
HT3V180DT	250	180	22	93	123	256	112	115	8	305	190	618	245	80	791	Ø47 × 17T
HT5V80DTP	160	125	18	76	123	190	89	125	8	228	138	464	195	79	619	Ø34.4 × 12T
HT5V140DTP	224	160	22	78	123	234	100	150	8	265	167	538	220	78	694	Ø47 × 17T
HT3V180DTH	250	180	22	93	123	256	112	175	8	305	190	618	245	80	791	Ø47 × 17T
HT5V140DTH	250	180	22	93	123	256	112	175	8	305	190	618	245	80	791	Ø47 × 17T

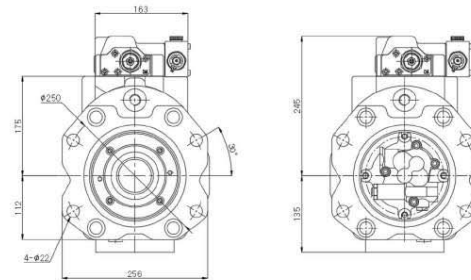
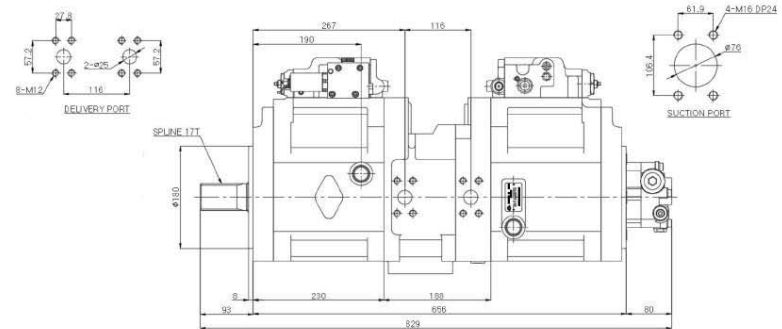
MAIN PUMP ASS'Y

HT5V200DTH



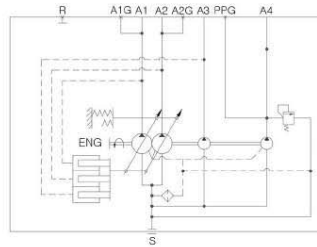
Specification

Max. Displacement cc/rev	Rated Pressure kgf/cm ²	Max Pressure		Max Self-priming Speed		Max Input Torque kgf·m	Application ton
		Mpa	kgf/cm ²	Mpa	rpm		
200 * 2	356	35	407	40	1900	2200	114



MAIN PUMP ASS'Y

AP2D21/25/28



Model Information

MODEL NAME: **AP2D** **21/25/28** **16** **4**

Displacement of P4 Gear P/P-1 - P4 Gear/P exclusion-4 - 4.5cc/rev-6 - 6.5cc/rev-9cc/rev

Displacement of Piston P/P-21cc/rev -25cc/rev -27.5cc/rev

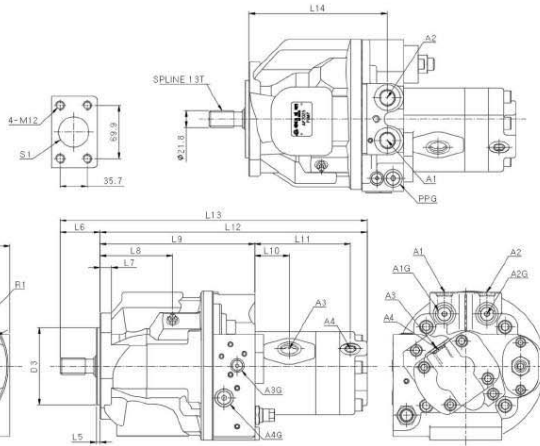
Displacement of P3 Gear P/P-1 - P3 Gear P/P exclusion -16-16.2cc/rev

Specification

MODEL	Max. Displacement cc/rev				Pressure		Max Flow l/min	Max Speed Self Priming rpm	Max Input Torque kgf-m	Application ton
	A1	A2	A3	A4	Rated	Max				
AP2D21	21	21	16.2	4.5/9	220	250	55 × 2	2200	14	7
AP2D25	25	25	16.2	4.5/6.5/9	220	250	55 × 2	2200	14	7
AP2D28	27.5	27.5	16.2	6.5/9	220	250	61.6 × 2	2200	14	7

Port Size

PORT	SIZE
S1 INPUT PORT	Ø40
A1, A2 OUTPUT PORT	PF 1/2
A3 OUTPUT PORT	PF 1/2
A4 OUTPUT PORT	4.5/6cc : PF3/8 9cc : PF 1/2
A1G, A2G GAUGE PORT	PF 1/4
A3G GAUGE PORT	PF 1/8
A4G GAUGE PORT	PF 1/4
PPG GAUGE PORT	PF 1/4
R1 AIR BREATHER PORT	

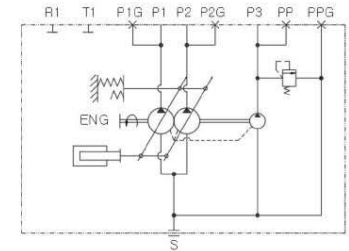


Dimensions

MODEL	D1	D2	D3	d	L1	L2	L3	L4	L5	L6	L7	L8	L9	L10	L11	L12	L13	L14
16.2 + 4.5cc	146	175	101.6	14	97	97	104.5	95	5	52.5	15	95	203.5	43	118	340	392.5	
16.2 + 6.5cc															131	364.5	417	181.5
16.2 + 9cc															135	368	420.5	

MAIN PUMP ASS'Y

AP2D36

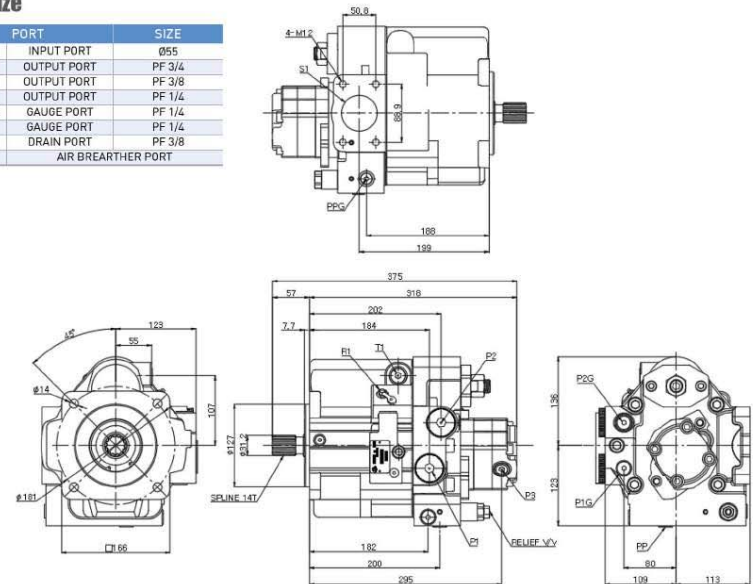


Specification

MODEL	Max. Displacement cc/rev			Pressure		Max Flow l/min	Max Speed Self Priming rpm	Max Input Torque kgf-m	Application ton
	P1	P2	P3	Rated	Max				
AP2D36	37	37	6.5	280	300	74 × 2	2000	17.8	8

Port Size

PORT	SIZE
S1 INPUT PORT	Ø55
P1, P2 OUTPUT PORT	PF 3/4
P3 OUTPUT PORT	PF 3/8
PP OUTPUT PORT	PF 1/4
P1G, P2G GAUGE PORT	PF 1/4
PPG GAUGE PORT	PF 1/4
T1 DRAIN PORT	PF 3/8
R1 AIR BREATHER PORT	

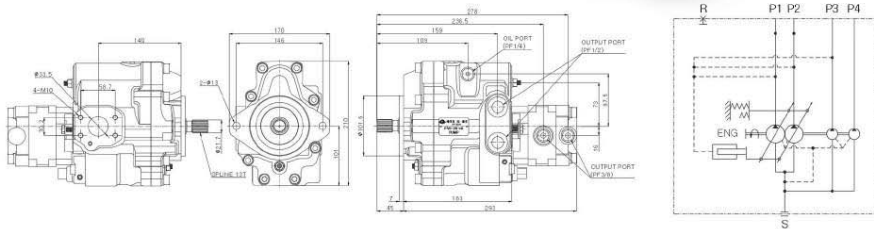


MAIN PUMP ASS'Y

PVD-2B-40 PUMP

Specification

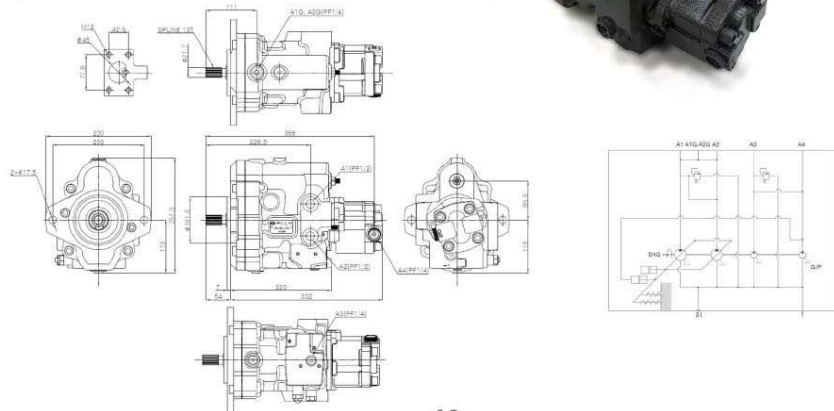
Max. Displacement cc/rev				Pressure Rated Max		Max Flow	Max Speed Self Priming	Application
P1	P2	P3	P4	kgf/cm ²	kgf/cm ²	l/min	rpm	ton
20	20	6.4	2.7	235	250	74×2	2400	~4.5



PSVD2-27E

Specification

Max. Displacement cc/rev				Pressure Rated Max		Max Flow	Max Speed Self Priming	Application
P1	P2	P3	P4	kgf/cm ²	kgf/cm ²	l/min	rpm	ton
27	27	13	19.5	235	250	60×2	2400	4.5-6

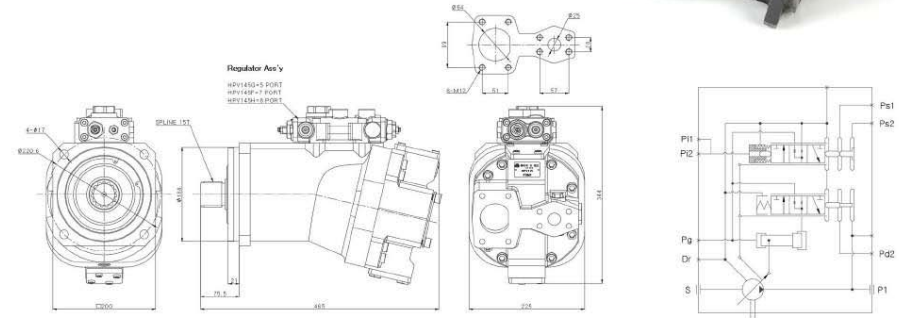


MAIN PUMP ASS'Y

HPV145 PUMP

Specification

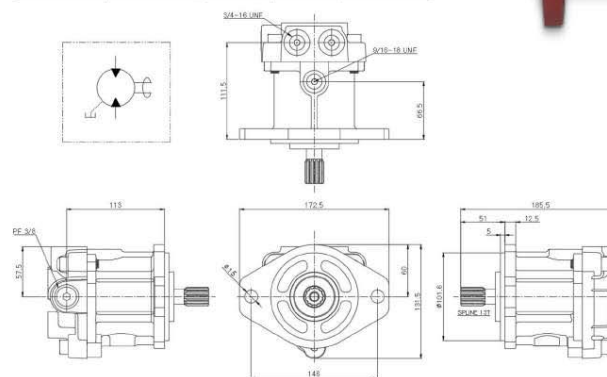
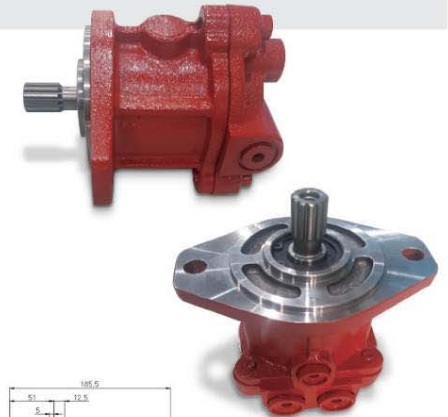
Displacement cc/rev	Max. Speed kgf/cm ²	Max. Speed rpm	Application ton
145	350	2000	30



EC460 : FAN MOTOR

Specification

Displacement cc/rev	Max. Working Pressure Mpa	Max. Speed rpm	Max. Flow Rate L/min	Application VOL.V0
16.4-18.4	24.5	3000	50	EC330/360/380/ 460/480



TRAVEL MOTOR ASS'Y

HTM 06VN



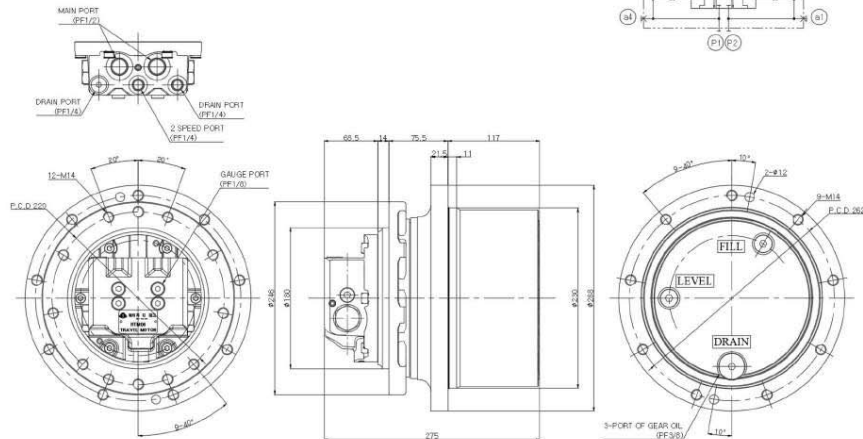
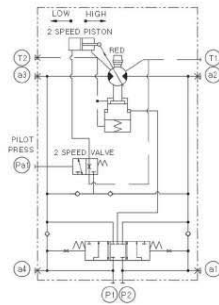
Model Information

HTM 06 VN 24/14 1

Model Name: HTM 06 VN 24/14 1 Displacement High, Low Speed
 Size Number 06 Design code
 Motor Type

Specification

SPECIFICATION		HTM06	
		1 SPEED	2 SPEED
Reduction Gear	Gear Ratio	68.6	
	Output Torque	kgf-m	533 309
	Speed	rpm	35.5 61.1
Hydraulic Motor	Max Displacement	cc/rev	24.6 14.8
	Output Speed	rpm	2438 4192
	Max Pressure	kgf/cm ²	300
	Mechanical Brake Torque	kgf-m	6.6
	Application	Ton	4



TRAVEL MOTOR ASS'Y

HTM 07/09



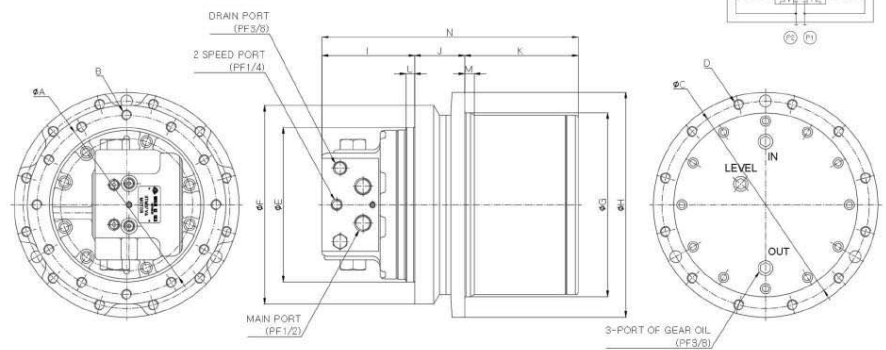
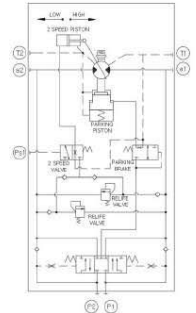
Model Information

HTM 09 VC 49/26 1

Model Name: HTM 09 VC 49/26 1 Displacement High, Low Speed
 Size Number 07/09 Design code
 Motor Type

Specification

SPECIFICATION		HTM07VA		HTM09	
		1 SPEED	2 SPEED	1 SPEED	2 SPEED
Reduction Gear	Gear Ratio	53.7		53.7	
	Output Torque	kgf-m	709 449	1117 629	
	Speed	rpm	21.9 40.4	30.3 56.6	
Hydraulic Motor	Max Displacement	cc/rev	39.5 25	49.2 26.3	
	Output Speed	rpm	1176 2171	1626 3042	
	Max Pressure	kgf/cm ²	300	350	
	Mechanical Brake Torque	kgf-m	8.4	8.4	
	Application	Ton	5	8	



Dimensions

MODEL	A	B	C	D	E	F	G	H	I	J	K	L	M	N
HTM07VA	244	12-M14	282	12-M14	210	270	250	306						
HTM09	250	12-M16	300	12-M14	210	280	265	325	120	80	148.5	12	13	348.5

TRAVEL MOTOR ASS'Y

HTM 10/18



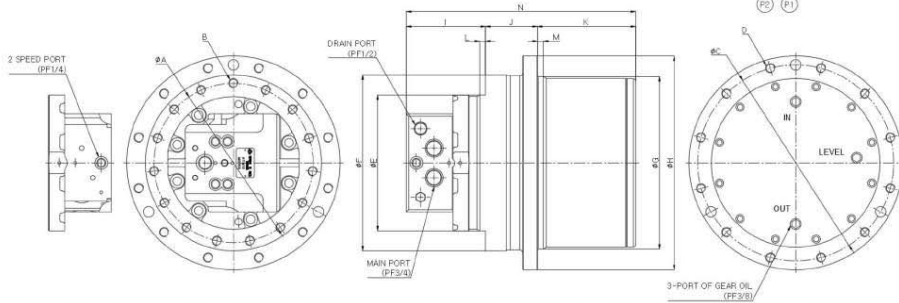
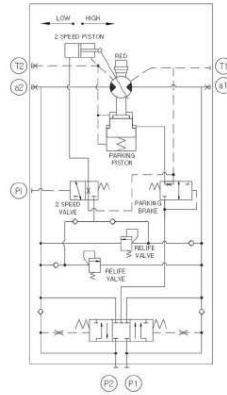
Model Information

HTM 10/18 VC 69/43 1

Model Name: HTM 10/18 VC 69/43 1
 Size Number: 10/18
 Motor Type: Displacement High, Low Speed
 Design code

Specification

SPECIFICATION		HTM10/HTM18	
		1 SPEED	2 SPEED
Reduction Gear	Gear Ratio		53
	Output Torque	kgf-m	1960 1223
	Speed	rpm	17 27.2
Hydraulic Motor	Max Displacement	cc/rev	68.9 43
	Output Speed	rpm	900 1442
	Max Pressure	kgf/cm ²	350
	Mechanical Brake Torque	kgf-m	19.7
	Application	Ton	14



MODEL	A	B	C	D	E	F	G	H	I	J	K	L	M	N
HTM10	270	15-M16X2.0	332	12-M16X2.0	230	298	292	362	134	88	166.5	10	10	388.5
HTM18	280	20-M16X2.0	364	20-M16X2.0	246	308	324	394	134	99.5	155	14	14	388.5

TRAVEL MOTOR ASS'Y

HTM 40VC



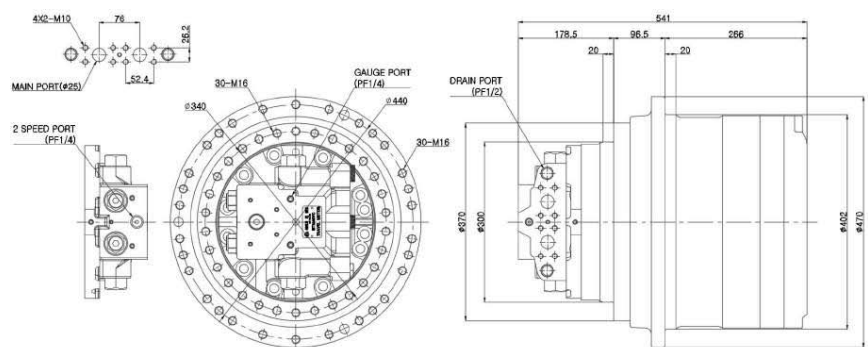
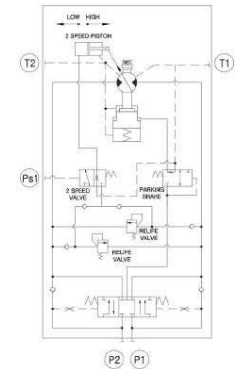
Model Information

HTM 40 VC 161/101 1

Model Name: HTM 40 VC 161/101 1
 Size Number: 40
 Motor Type: Displacement High, Low Speed
 Design code

Specification

SPECIFICATION		HTM40VC	
		1 SPEED	2 SPEED
Reduction Gear	Gear Ratio		48
	Output Torque	kgf-m	4236 2663
	Speed	rpm	28.3 45
Hydraulic Motor	Max Displacement	cc/rev	161 101
	Output Speed	rpm	1361 2165
	Max Pressure	kgf/cm ²	350
	Mechanical Brake Torque	kgf-m	49.3
	Application	Ton	22



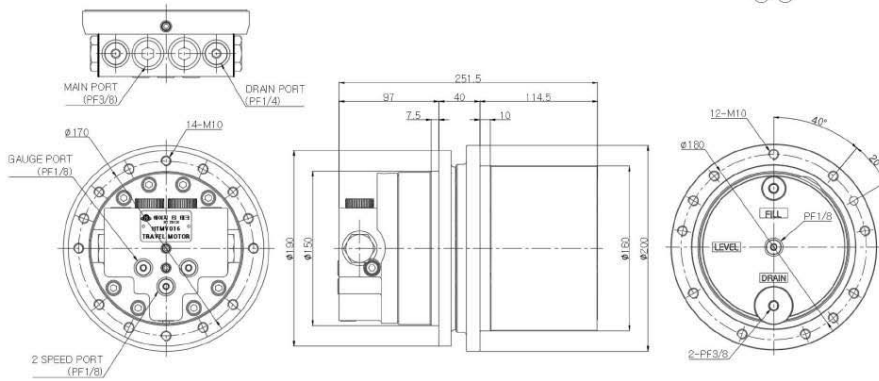
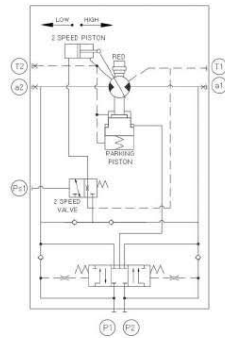
TRAVEL MOTOR ASS'Y

HTMV 016



Specification

SPECIFICATION	HTMV016		HTMV016	
	1 SPEED	2 SPEED	1 SPEED	2 SPEED
Reduction Gear	Gear Ratio 42.7			
	Output Torque	kgf·m	275.5	191.8
	Speed	rpm	50	71.6
Hydraulic Motor	Max Displacement	cc/rev	16.5	11.5
	Output Speed	rpm	2134	3058
Hydraulic Motor	Max Pressure	kgf/cm ²	250	250
	Mechanical Brake Torque	kgf·m	5	5
	Application	Ton	1.5	1.5



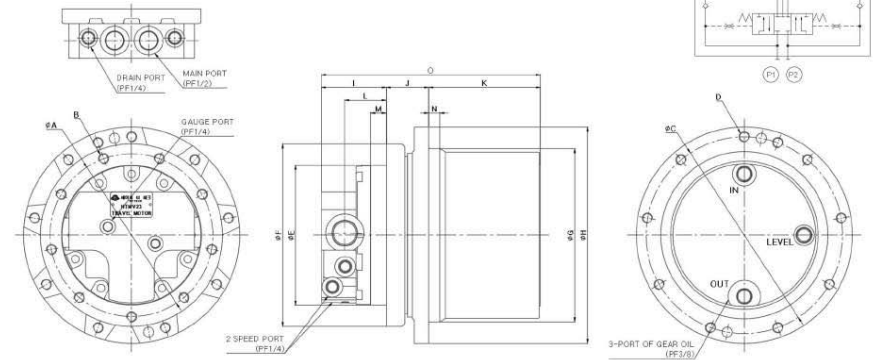
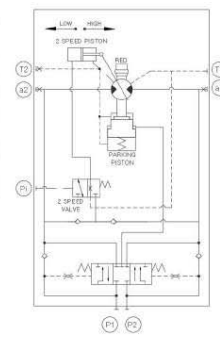
TRAVEL MOTOR ASS'Y

HTMV SERIES 16/21/23



Specification

SPECIFICATION	HTMV16		HTMV16		HTMV21		HTMV21		HTMV23			
	1 SPEED	2 SPEED	1 SPEED	2 SPEED	1 SPEED	2 SPEED	1 SPEED	2 SPEED	1 SPEED	2 SPEED		
Reduction Gear	Gear Ratio 53.7											
	Output Torque	kgf·m	344	212	271	165	451	241	351.7	186.5	482	301.5
	Speed	rpm	39.7	62.6	50.7	78.5	31	58.2	39.6	74.2	50.7	78.5
Hydraulic Motor	Max Displacement	cc/rev	16.4	10.4	21	11.2	21	11.2	21	11.2	23.5	14.7
	Output Speed	rpm	2134	3365	2134	3305	1647	3125	1667	3125	1489	2380
Hydraulic Motor	Max Pressure	kgf/cm ²	250	250	250	250	250	250	250	250	250	
	Mechanical Brake Torque	kgf·m	50	50	50	50	50	50	50	50	50	
	Application	Ton	3.5	3.5	3.5	3.5	3.5	3.5	3.5	3.5	3.5	



Dimensions

MODEL	规格	A	B	C	D	E	F	G	H	I	J	K	L	M	N	O
HTMV16	9齒 / 9齒	192	9-M12	215	9-M12	165	215	190	240	76.5	50	132	49	18.5	13	258.5
	18齒 / 9齒	192	18-M12	215	9-M12	165	215	190	240	76.5	50	132	49	18.5	13	258.5
HTMV21	9齒 / 10齒	192	9-M12	232	10-M12	165	215	204	255	66	72	120.5	38.5	8	12	258.5
	18齒 / 19齒	192	18-M12	232	19-M12	165	215	204	255	66	72	120.5	38.5	8	12	258.5
HTMV23	9齒 / 10齒	192	9-M12	232	10-M12	165	215	204	255	76.5	50	132	49	18.5	13	258.5

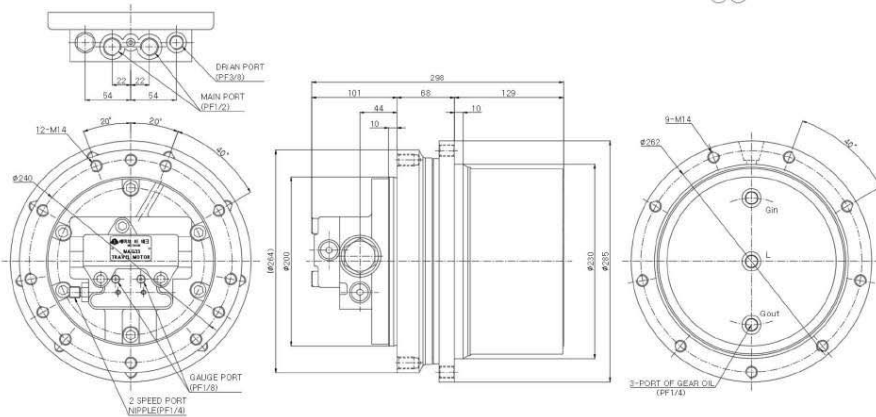
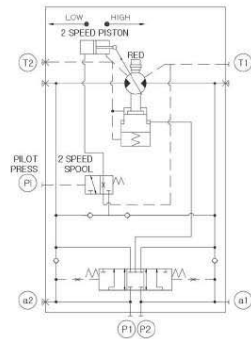
TRAVEL MOTOR ASS'Y

MAG33



Specification

SPECIFICATION		MAG33	
		1 SPEED	2 SPEED
Reduction Gear	Gear Ratio		47.4
	Output Torque	kgf·m	714.4
	Speed	rpm	37.4
Hydraulic Motor	Max Displacement	cc/rev	33.8
	Output Speed	rpm	1775
	Max Pressure	kgf/cm ²	280
	Mechanical Brake Torque	kgf·m	7.9
Application	Ton	4	



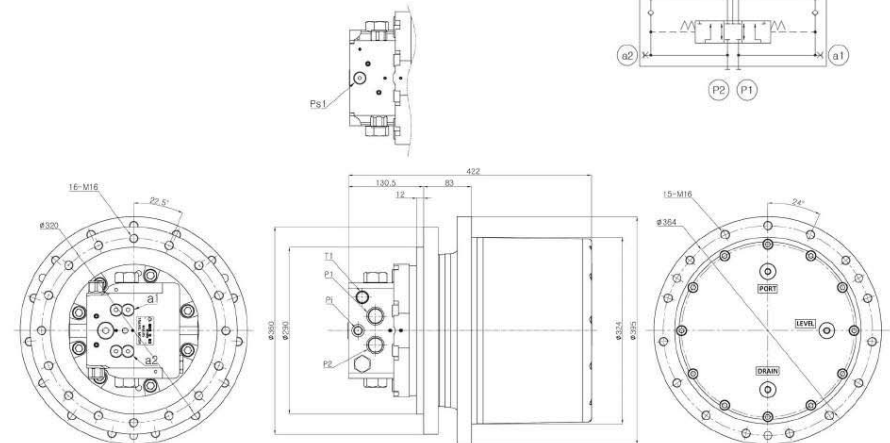
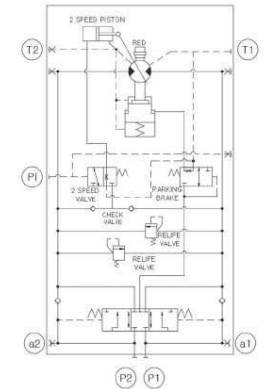
TRAVEL MOTOR ASS'Y

MAG85



Specification

SPECIFICATION		MAG85	
		1 SPEED	2 SPEED
Reduction Gear	Gear Ratio		54
	Output Torque	kgf·m	2445
	Speed	rpm	28
Hydraulic Motor	Max Displacement	cc/rev	81.4
	Output Speed	rpm	1516
	Max Pressure	kgf/cm ²	350
	Mechanical Brake Torque	kgf·m	19.7
Application	Ton	14	



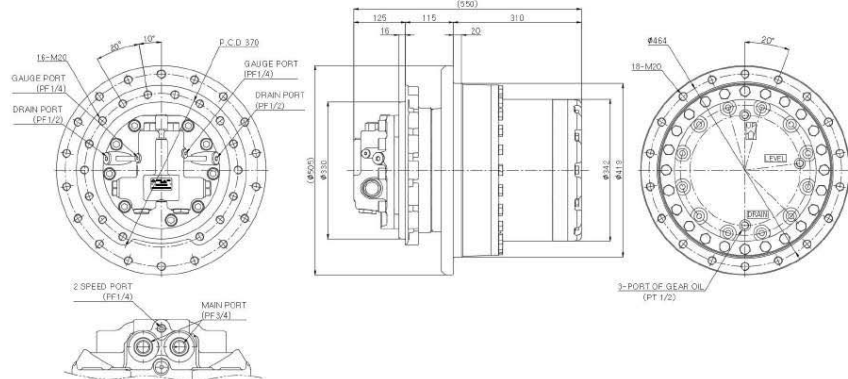
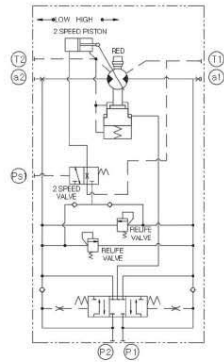
TRAVEL MOTOR ASS'Y

ZAXIS200



Specification

SPECIFICATION		ZAXIS200		
		1 SPEED	2 SPEED	
Reduction Gear	Gear Ratio	58.6		
	Output Torque	kgf.m	4227	2798
	Speed	rpm	22	33.7
Hydraulic Motor	Max Displacement	cc/rev	123.3	81
	Output Speed	rpm	1297	1973
	Max Pressure	kgf/cm ²	360	
	Mechanical Brake Torque	kgf.m	50	
Application	Ton	20		



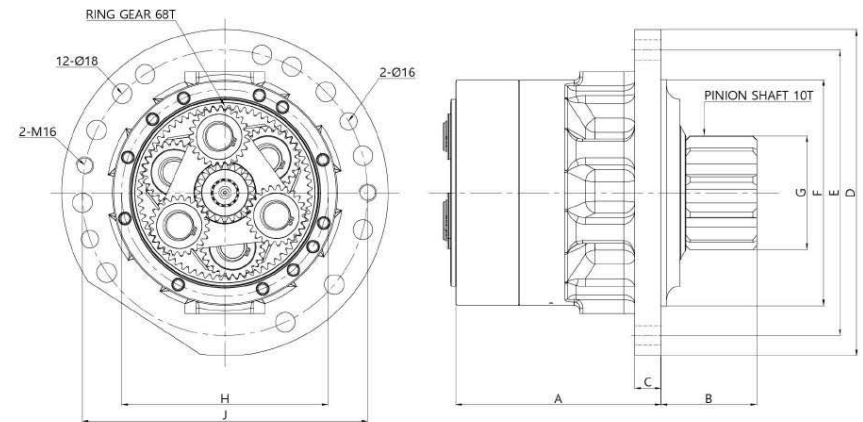
SWING REDUCTION

PC60-7



Specification

Motor displacement cc/rev.	Max.output torque N.m	Gear Ratio	Reducer Max. speed	Max. flow l/min	Nomal pressure bar	Peak pressure bar	Brake Torque(Motor) N.m	Output Pinion		Application ton
			rpm					Module	Number	
30	2118	19.5	60	35.6	230	276	137	8	10	6



Dimensions

MODEL	A	B	C	D	E	F	G	H	J
PC60-7	187	87	24	Ø297	Ø260	Ø206	Ø103.6	Ø188	Ø260

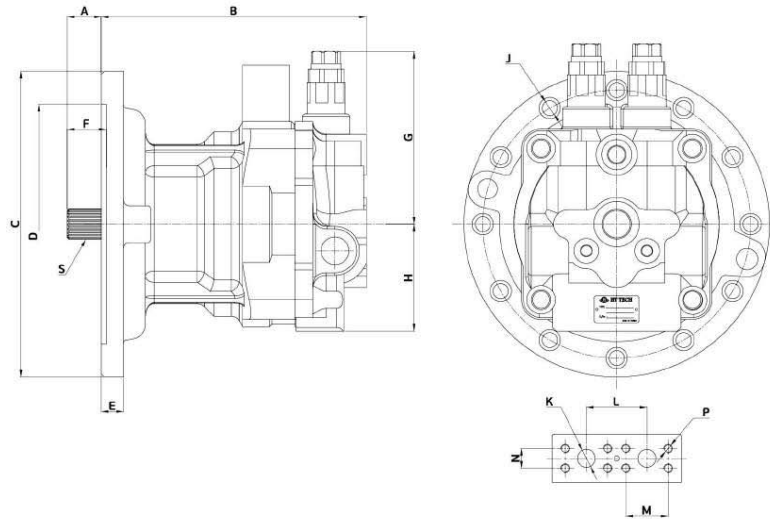
SWING MOTOR

M2X150



Specification

MODEL	Output Torque kgf.m	Max Speed rpm	Displacement cc/rev	Brake Torque kgf.m	Rated Pressure kgf/cm ²	Time Delay	Weight kg	Application ton
M2X150	82.7	1600	148.5	71	350	○	66	21-25



Dimensions

MODEL	A	B	C	D	E	F	G	H	J	K	L	M	N	P	S
M2X150	22	303	Ø340	Ø330	25	27.5	168.5	117	12-Ø17	2-Ø20	68	47.6	22.2	M10*P1.5	M2.5, Z:16T

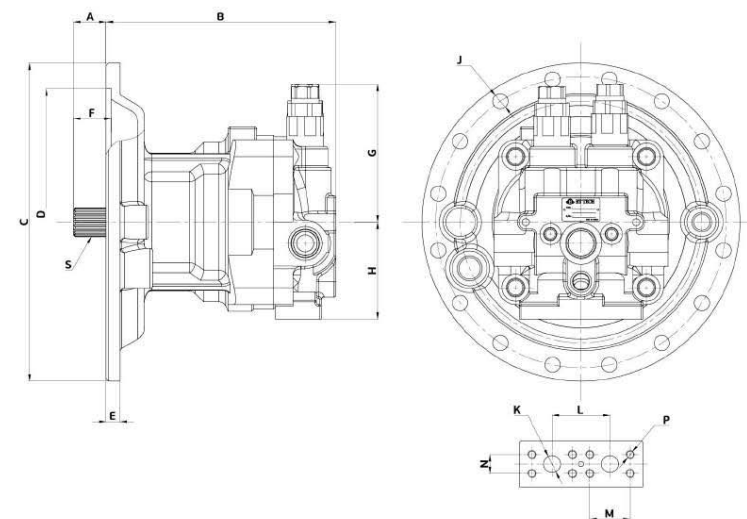
SWING MOTOR

M5X130



Specification

MODEL	Output Torque kgf.m	Max Speed rpm	Displacement cc/rev	Brake Torque kgf.m	Rated Pressure kgf/cm ²	Weight kg	Application ton
M5X130	67.8	1500	148.5	63.5	350	52.5	21-25

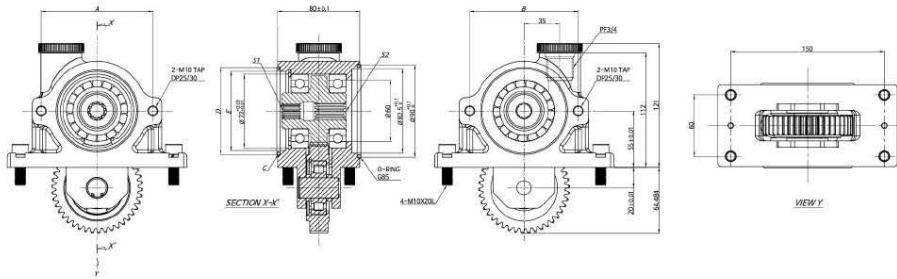


Dimensions

MODEL	A	B	C	D	E	F	G	H	J	K	L	M	N	P	S
M5X130	38	270	Ø374	Ø314	16.5	44	162	114	16-Ø18	2-Ø20	68	47.6	22.2	M10*P1.5	DP16/32, Z:21T

PTO GEAR BOX

Application : PTO GEAR BOX FOR HT3V/HT5V MAIN PUMP ASS'Y



Dimensions

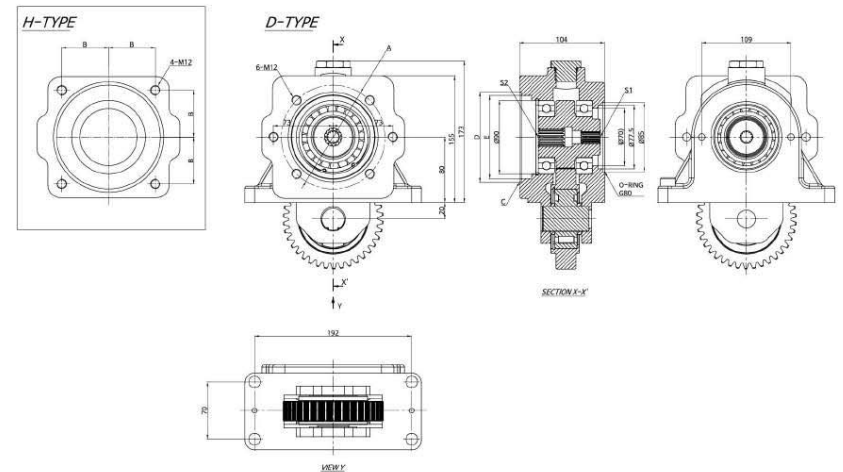
MODEL	A	B	C	D	E	
HT3V63DTP	A-TYPE	109	106.4	G80	85	77.5
HT3V112DTP	B-TYPE	109	106	G80	85	77.5
HT5V80DTP	C-TYPE	106.4	106.4	G85	90	82.5
HT5V140DTP	D-TYPE	106.4	106.4	G85	90	82.5

Dimension of shaft end

MODEL	S1					S2				
	NO. of teeth	Module	Pressure	Rule	NO. of teeth	Module	Pressure	Rule		
HT3V63DTP	A-TYPE	13	1	20°	JIS	10	16/32	30°	SAE	
HT3V112DTP	B-TYPE	13	1	20°	JIS	10	16/32	30°	SAE	
HT5V80DTP	C-TYPE	13	1	20°	JIS	10	16/32	30°	SAE	
HT5V140DTP	D-TYPE	13	1	20°	JIS	10	16/32	30°	SAE	

PTO GEAR BOX

Application : PTO GEAR BOX FOR HT3V180DTP MAIN PUMP ASS'Y



Dimensions

MODEL	A	B	C	D	E	
HT3V180DTP	D-TYPE	Ø127	-	G105	Ø110	Ø101.6
	H-TYPE	-	57.2	G130	Ø135	Ø127

Dimension of shaft end

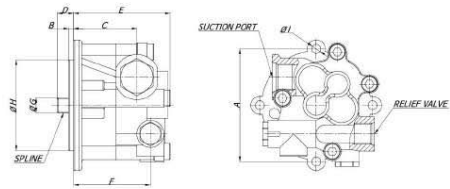
MODEL	S1					S2				
	NO. of teeth	Module	Pressure	Rule	NO. of teeth	Module	Pressure	Rule		
HT3V180DTP	D-TYPE	13	1	20°	JIS	13	16/32	30°	SAE	
	H-TYPE	13	1	20°	JIS	13	16/32	30°	SAE	

GEAR PUMP

HT3V/HT5V DT SERIES

Specification

Displacement	Rated Pressure	Speed Range	Rotation	Max Continuous Temp.
cc/rev	kgf/cm ²	rpm	(view from shaft end)	°C
15	50	3200	CW	-20~90
10	50	3200	CW	-20~90



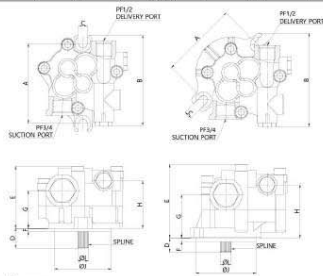
Dimensions

	A	B	C	D	E	F	G	H	SPLINE
HT3V63DT	100	6.5	80	17	93	5	59.5	73	Ø13.8*12T Ø14.8*13T
HT3V112DT	112	9.5	90	17	93	5	59.5	73	
HT3V140&180DT	138	11	100	14	96	5	62.5	76	

HT3V/HT5V DTP SERIES (IN/OUT DRAIN)

Specification

Displacement	Rated Pressure	Speed Range	Rotation	Max Continuous Temp.
cc/rev	kgf/cm ²	rpm	(view from shaft end)	°C
15	50	3200	CW	-20~90
10	50	3200	CW	-20~90



Dimensions

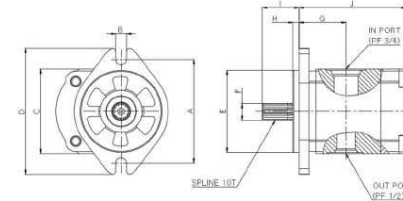
Model	A	B	C	D	E	F	G	H	SPLINE
LP(IN DRAIN)	109	11	77.5	25	93	5	52	65	Ø14.8*13T
LP(OUT DRAIN)	109	11	77.5	25	61	5	65	65	
RP(OUT DRAIN)	106	11	82.55	17	101	5	60	73	

GEAR PUMP

HPV050/O102/O91EW/116/145 SINGLE TYPE

Specification

Displacement	Rated Pressure	Speed Range	Rotation	Max Continuous Temp.
cc/rev	kgf/cm ²	rpm	(view from shaft end)	°C
16.8	180	3200	CW(HPV0116) CCW(HPV0118)	-20~90

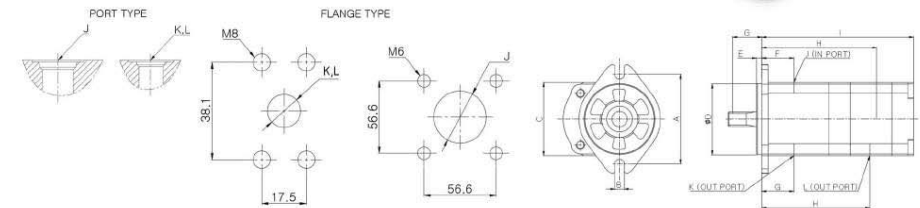


Dimensions

	A	B	C	D	E	F	G	H	I	J (IN PORT)	K (OUT PORT)	L (OUT PORT)	SPLINE
16.8	104	11	85	127	82.5	17	47.2	6.2	37	107.7	PF 3/4	PF 1/2	Ø17*10T

Specification

Displacement	Rated Pressure	Speed Range	Rotation	Max Continuous Temp.
cc/rev	kgf/cm ²	rpm	(view from shaft end)	°C
25 + 10cc	180	3200	CW	-20~90
25 + 16cc				
26 + 11cc				



Dimensions

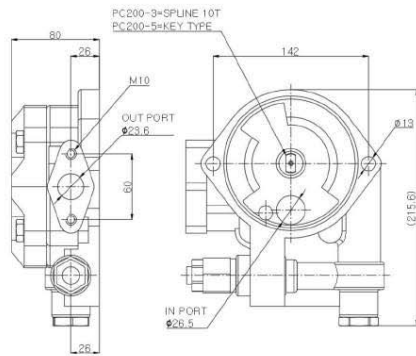
	A	B	C	D	E	F	G	H	I	J (IN PORT)	K (OUT PORT)	L (OUT PORT)	SPLINE
25 + 10cc	104	11	85	82.5	6.2	57	39	133.6	185.4	PF 1	PF 3/4	PF 1/2	Ø17*10T
25 + 16cc						49	34.2	145.6	223				
26 + 11cc						49	34.2	133.7	183				

GEAR PUMP

HPV90(PC200-3/5)

Specification

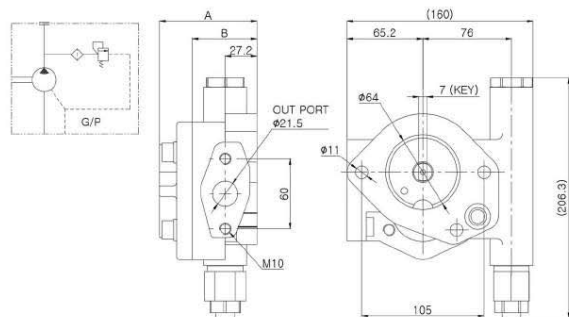
Displacement	Rated Pressure	Speed Range	Rotation	Max Continuous Temp.
cc/rev	kgf/cm ²	rpm	(view from shaft end)	°C
23.5	50	4000	CW	-20~90



HPV95(PC200-6/7) / HPV132(PC300-6)

Specification

MODEL	Displacement	Rated Pressure	Speed Range	Rotation	Max Continuous Temp.
	cc/rev	kgf/cm ²	rpm	(view from shaft end)	°C
PC200-6/7	13.2	200	3200	CW	-20~90
PC300-6	17.6				

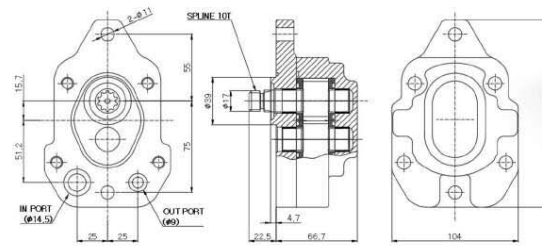


GEAR PUMP

A8V55/80/86/107

Specification

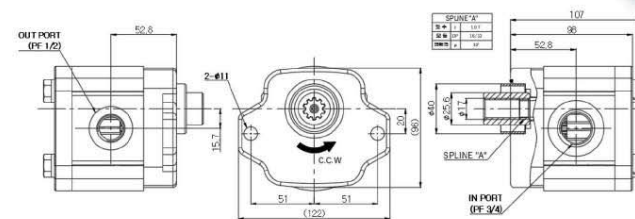
Displacement	Rated Pressure	Speed Range	Rotation	Max Continuous Temp.
cc/rev	kgf/cm ²	rpm	(view from shaft end)	°C
12	180	2500	CW	-20~90



A10V43

Specification

Displacement	Rated Pressure	Speed Range	Rotation	Max Continuous Temp.
cc/rev	kgf/cm ²	rpm	(view from shaft end)	°C
12(110 권용)	180	2800	CCW	-20~90

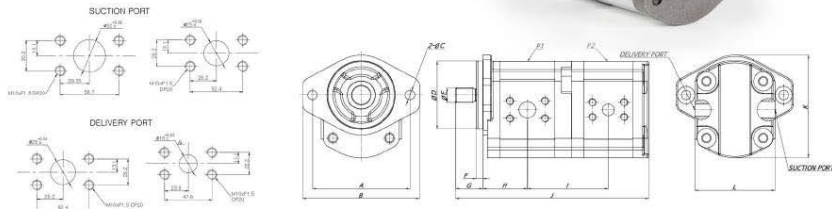


GEAR PUMP

REXROTH DOUBLE TYPE

Specification

MODEL	REXROTH	
Discharge Rate(cc/rev.)	P1 30	P2 23
Max. Pressure(kg/cm ²)	250	
Max. Speed	2800	



Dimensions

MODEL	A	B	C	D	E	F	G	H	I	J	K	L
REXROTH (30/23CC)	144	175	14.5	101.6	21.8	9.5	41	66.8	120.7	290	154	120



EPPR VALVE ASS'Y

5K-10/40, 5K-20/40, 5K-30/31 (POSITIVE) 5KR-20/40 (NEGATIVE)



34

REGULATOR

REGULATOR TYPE FOR 9C/9N/HN/9P/1N/2M



REGULATOR TYPE FOR 9T/YT/OE



35

REGULATOR

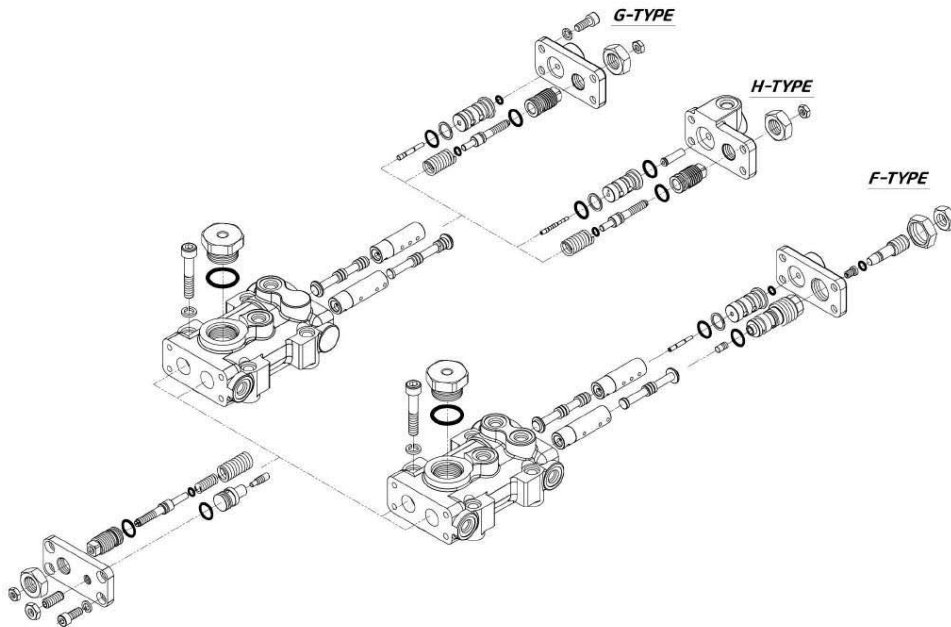
HPV145 (G/H/F)



G TYPE

H TYPE

F TYPE



MAIN PUMP SPARE PARTS

KAWASAKI	HT3V63DT	
	HT3V112DT	
	HT3V140DT	
	HT3V180DT	
	HT3V280DT	
	HT3V180DTP	
	HT5V80DTP	
	HT5V140DTP	
	HT5V160DTH	
	HT5V200DTH	
	HT5V212DP	
	HT7V63DTP	
	HT7V100DTP	
	HT7V125DTP	
K3SP30/36C		
K7SP36		
KVC925		
KOMATSU	HPV35(PC60-3/5)	
	HPV55(PC120-3/5)	
	HPV75(PC60-7)	
	HPV90(PC200-3/5)	
	HPV95(PC200-6/7/8)	
	HPV132(PC300-6)	
	HPV140(PC300-7/8)	
	HPV165(PC400-7)	
	LPD25-PI	
	HITACHI	HPKO55K
HPVO50		
HPVO91(EX200-2)		
HPVO102(EX200-5)		
HPVO105		
HPVO118(ZX200-3/5)		
HPVO116(EX200)		
HPV145(EX300)		
AP5553		
AP5567		
REXROTH/UCHIDA		A8V55
		A8V86
		A8V107
		A8VO80
	A8VO107	
	A8VO160	
	A8VO200	
	A10VO28	
	A10VO71	
	A10V40/43	
	A10VD43	
	AP2D18	
	AP2D21	
	AP2D25	
AP2D28		
AP2D36		
CATEPILLAR	AP12(E320B)	
	SBS80	
	SBS120	
SBS140		
KAYABA	PSVD2-21E	
	PSVD2-27E	
NACHI	PVD-2B-40	
	PVK-2B-505	
	PCL-200-18B	

TRAVEL MOTORS SPARE PARTS

TEIJIN SEIKI	HTM05/15/17VA
	HTM06
	HTM07
	HTM09
	HTM10/18
	HTM35VA
	HTM35VL
	HTM40VC
	HTM40VD
	HTMV16
EATON	HTMV21
	HTMV23
	HTMV40
	HTMV44
	HTMV147
HTMV155	
HITACHI	HMT36
	HMGF57/68A
ZAXIS200	
KAYABA	MSF170
	MSF340
HYUNDAI	R220LC-9
	RMV173/R300
KOMATSU	HTMV110

SWING MOTORS SPARE PARTS

KAWASAKI	M2X63
	M2X96
	M2X120
	M2X146
	M2X150
	M2X170
	M2X210
	M5X130
	M5X180
	EATON
HTMF43	
HTMF64	
HTMF68/72	
HTMF151	
HTMF195	
HTMF250	
HITACHI	HMS072/067
KOMATSU	KMF125(PC200-7/8)
SHIBAURA TOSHIBA	SG04
	SG08
	SG20
HYUNDAI	R140LC-9S
	R220LC-9
DOOSAN	DX55/60(TSM32)
	DX140W(TSM86)
DX225LC(TSM140)	
DX380(TSM280)	
KAYABA	MAG33
	MAG85

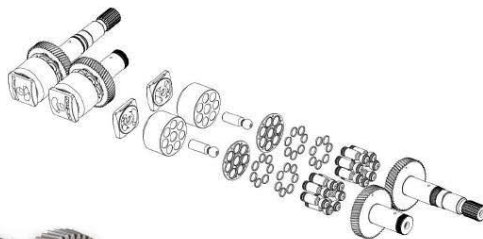
A8V55/86/107

No.	DESCRIPTION	SPEC	QTY
1	CYLINDER BLOCK		2PC
2	VALVE PLATE-RH		1PC
3	VALVE PLATE-LH		1PC
4	PISTON ASS'Y	7PCS/SET	2SET
5	SET PLATE		2PC
6	CENTER PIN		2PC
7	SERVO PISTON		2PC
8	DRIVE SHAFT-LONG		1PC
9	DRIVE SHAFT-SHORT		1PC



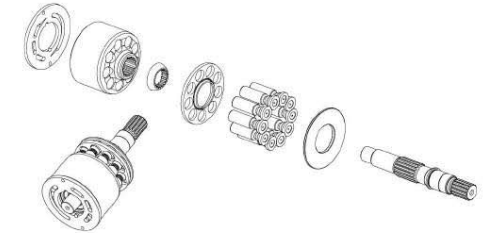
A8VO80/O107/O160/O200

No.	DESCRIPTION	SPEC	QTY
1	CYLINDER BLOCK		2PC
2	VALVE PLATE-RH		1PC
3	VALVE PLATE-LH		1PC
4	PISTON ASS'Y	7PCS/SET	2SET
5	SET PLATE		2PC
6	CENTER PIN		2PC
7	SERVO PISTON		2PC
8	DRIVE SHAFT-LONG		1PC
9	DRIVE SHAFT-SHORT		1PC



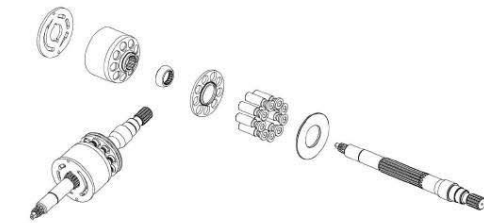
A10V40/43

No.	DESCRIPTION	SPEC	QTY
1	CYLINDER BLOCK	φ40	2PC
2	VALVE PLATE-RH		1PC
3	VALVE PLATE-LH		1PC
4	PISTON ASS'Y	9PCS/SET	2SET
5	BALL GUIDE		2PC
6	SET PLATE		2PC
7	SHOE PLATE		2PC
8	SPRING (CYLINDER)		2PC
9	PIN (CYLINDER)	3PCS/SET	2SET
10	WASHER (CYLINDER)		4PC
11	DRIVE SHAFT		2PC



A10VD43

No.	DESCRIPTION	SPEC	QTY
1	CYLINDER BLOCK	φ36.6	2PC
2	VALVE PLATE-RH	φ45.3	1PC
3	VALVE PLATE-LH	φ34.2	1PC
4	PISTON ASS'Y	9PCS/SET	2SET
5	BALL GUIDE		2PC
6	SET PLATE		2PC
7	SHOE PLATE		2PC
8	PIN (CYLINDER)	3PCS/SET	2SET
9	WASHER (CYLINDER)		4PC
10	SPRING (CYLINDER)		2PC
11	DRIVE SHAFT		2PC



A10VO28

No.	DESCRIPTION	SPEC	QTY
1	CYLINDER BLOCK		1PC
2	VALVE PLATE-RH		1PC
3	VALVE PLATE-LH		1PC
4	PISTON ASSY	9PCS/SET	1SET
5	SET PLATE		1PC
6	BALL GUIDE		1PC
7	SHAFT	L172	1PC
8	SHAFT	L182	1PC



A10VO71

No.	DESCRIPTION	SPEC	QTY
1	CYLINDER BLOCK		1PC
2	VALVE PLATEIRH/LHI-5.9T	UCHIDA TYPE	1PC
2-1	VALVE PLATEIRH/LHI-6.9T	REXROTH TYPE	1PC
3	PISTON ASSY	9PCS/SET	1SET
4	BALL GUIDE		1PC
5	SET PLATE		1PC
6	SHOE PLATE		1PC



AP5S53

No.	DESCRIPTION	SPEC	QTY
1	CYLINDER BLOCK		1PC
2	VALVE PLATE		1PC
3	PISTON ASSY	9PCS/SET	1SET
4	SET PLATE		1PC
5	BALL GUIDE		1PC
6	SHOE PLATE		1PC
7	DRIVE SHAFT		1PC



AP5S67

No.	DESCRIPTION	SPEC	QTY
1	CYLINDER BLOCK		1PC
2	VALVE PLATE		1PC
3	PISTON ASSY	9PCS/SET	1SET
4	SET PLATE		1PC
5	BALL GUIDE		1PC
6	SHOE PLATE		1PC
7	DRIVE SHAFT		1PC



AP12(E320B)

No.	DESCRIPTION	SPEC	QTY
1	CYLINDER BLOCK		2PC
2	VALVE PLATE-RH		1PC
3	VALVE PLATE-LH		1PC
4	PISTON ASS'Y	9PCS/SET	25SET
5	BALL GUIDE		2PC
6	SPACER		2PC
7	SET PLATE		2PC
8	SHOE PLATE		2PC
9	SPRING(CYLINDER)	9PCS/SET	25SET
10	TILTING PIN		2PC
11	DRIVE SHAFT-LONG		1PC
12	DRIVE SHAFT-SHORT		1PC
13	SWASH PLATE		1PC



SBS80/120/140

No.	DESCRIPTION	SPEC	QTY
1	CYLINDER BLOCK		2PC
2	VALVE PLATE-RH		1PC
3	VALVE PLATE-LH		1PC
4	PISTON ASS'Y	9PCS/SET	25SET
5	BALL GUIDE		2PC
6	SPACER		2PC
7	SET PLATE		2PC
8	SHOE PLATE		2PC
9	SPRING(CYLINDER BLOCK)	9PCS/SET	15SET
10	TILTING PIN		2PC
11	SLIDING BEARING(SUPPORT)		1PC
12	SLIDING BEARING(SWASH)		1PC
13	DRIVE SHAFT-LONG		1PC
14	DRIVE SHAFT-SHORT		1PC
15	SWASH PLATE		1PC



AP2D18/21/25/28

No.	DESCRIPTION	SPEC	QTY
1	CYLINDER BLOCK		1PC
2	VALVE PLATE		1PC
3	PISTON ASS'Y	10PCS/SET	15SET
4	BALL GUIDE		1PC
5	SET PLATE		1PC
6	SHOE PLATE	3.5mm/2mm/1mm	1PC
7	PI(CYLINDER)		1PC
8	SPRING(CYLINDER)		1PC
9	SPACER(SPRING)		1PC
10	WASHER(CYLINDER)		1PC
11-1	DRIVE SHAFT	13T L235	1PC
11-2	DRIVE SHAFT(NEW)	15T L250	1PC
12	SWASH PLATE		1PC



AP2D36

No.	DESCRIPTION	SPEC	QTY
1	CYLINDER BLOCK		1PC
2	VALVE PLATE		1PC
3	PISTON ASS'Y	10PCS/SET	15SET
4	BALL GUIDE		1PC
5	SET PLATE		1PC
6	PI(CYLINDER)		3PC
7	SPRING(CYLINDER)		1PC
8	SPACER(SPRING)		1PC
9	WASHER(CYLINDER)		2PC
10	DRIVE SHAFT		1PC
11	SWASH PLATE		1PC



HPVO91EW/DW/DS

No.	DESCRIPTION	SPEC	QTY
1	HEAD COVER		1PC
2	CYLINDER BLOCK		2PC
3	VALVE PLATE		1PC
4	PISTON ASS'Y	7PCS/SET	25SET
5	CENTER PIN		2PC
6	SERVO PISTON		2PC
7	SERVO PISTON PIN		2PC
8	DRIVE SHAFT-LONG	EW/DW/DS	1PC
9	DRIVE SHAFT-SHORT	EW/DW	1PC



HPVO50/O102/O105/O118

No.	DESCRIPTION	SPEC	QTY
1	HEAD COVER		1PC
2	CYLINDER BLOCK		2PC
3	VALVE PLATE-RH		1PC
4	VALVE PLATE-LH		1PC
5	PISTON ASS'Y	7PCS/SET	25SET
6	CENTER PIN		2PC
7	SERVO PISTON		2PC
8	DRIVE SHAFT-LONG		1PC
9	DRIVE SHAFT-SHORT		1PC



44

HPVO116/145

No.	DESCRIPTION	SPEC	QTY	
1	HEAD COVER	116, 145	C TYPE	1PC
2	HEAD COVER	116, 145	D TYPE	1PC
3	HEAD COVER	145	F TYPE	1PC
4	CYLINDER BLOCK			1PC
5	VALVE PLATE			1PC
6	PISTON ASS'Y	7PCS/SET		15SET
7	CENTER PIN	C/G TYPE		1PC
8	SERVO PISTON			1PC
9	SERVO PISTON PIN			1PC
10	DRIVE SHAFT			1PC



HPV55(PC120-3/5)

No.	DESCRIPTION	SPEC	QTY	
1	CYLINDER BLOCK		2PC	
2	VALVE PLATE-RH		1PC	
3	VALVE PLATE-LH		1PC	
4	PISTON ASS'Y	9PCS/SET	25SET	
5	BALL GUIDE		2PC	
6	SET PLATE		2PC	
7	DRIVE SHAFT-LONG	PC120-3	296mm	1PC
8	DRIVE SHAFT-LONG	PC120-5	296.8mm	1PC
9	DRIVE SHAFT-SHORT			1PC
10	CAM ROCKER			2PC
11	CRADLE-RH			1PC
12	CRADLE-LH			1PC



45

HPV75(PC60-7/8)

No.	DESCRIPTION	SPEC	Q'TY
1	CYLINDER BLOCK		1PC
2	VALVE PLATE		1PC
3	PISTON ASS'Y	9PCS/SET	1SET
4	BALL GUIDE		1PC
5	SET PLATE		1PC
6	DRIVE SHAFT		1PC
7	CAM ROCKER		1PC
8	CRADLE		1PC



HPV90(PC200-3/5)

No.	DESCRIPTION	SPEC	Q'TY
1	CYLINDER BLOCK		2PC
2	VALVE PLATE-RH/LH	PC200-3	2PC
3	VALVE PLATE-RH/LH	PC200-5	2PC
4	PISTON ASS'Y	9PCS/SET	2SET
5	BALL GUIDE		2PC
6	SET PLATE		2PC
7	DRIVE SHAFT-LONG		1PC
8	DRIVE SHAFT-SHORT	PC200-3	1PC
9	DRIVE SHAFT-SHORT	PC200-5	1PC
10	CAM ROCKER		2PC
11	CRADLE-RH		1PC
12	CRADLE-LH		1PC



HPV95(PC200-6/7/8)

No.	DESCRIPTION	SPEC	Q'TY
1	CYLINDER BLOCK	PC200-6/7,	2PC
2	CYLINDER BLOCK	PC200-8	2PC
3	VALVE PLATE-RH/LH	PC200-6	1KEY
4	VALVE PLATE-RH/LH	PC200-7	1KEY
5	VALVE PLATE-RH/LH	PC200-6/7	2KEY
6	PISTON ASS'Y		9PCS/SET
7	BALL GUIDE		2PC
8	SET PLATE	PC200-6/7	2PC
9	SET PLATE	PC200-8	2PC
10	PI(CYLINDER)		6PC
11	SPRING(CYLINDER)		2PC
12	DRIVE SHAFT-LONG		1PC
13	DRIVE SHAFT-SHORT	PC200-6	6D95
14	DRIVE SHAFT-SHORT	PC200-7	6D102
15	SERVO PISTON		2PC
16	TILTING PIN		2PC
17	CAM ROCKER	PC200-6	OLD L156.3
18	CAM ROCKER	PC200-6	NEW L156.3
19	CAM ROCKER	PC200-7/8	L153.5
20	CRADLE-RH		1PC
21	CRADLE-LH		1PC



HPV132(PC300-6)/HPV140(PC300-7/8)/HPV165(PC400-7)

No.	DESCRIPTION	SPEC	Q'TY
1	CYLINDER BLOCK		2PC
2	VALVE PLATE-RH		1PC
3	VALVE PLATE-LH		1PC
4	PISTON ASS'Y	9PCS/SET	2SET
5	BALL GUIDE		2PC
6	SET PLATE		2PC
7	PI(CYLINDER)		6PC
8	DRIVE SHAFT-LONG		1PC
9	DRIVE SHAFT-SHORT		1PC
10	CAM ROCKER		2PC
11	CRADLE-RH		1PC
12	CRADLE-LH		1PC



HT3V63/112/140/180DT, DTP

No.	DESCRIPTION	SPEC	QTY
1	CYLINDER BLOCK	BUSH	2PC
1-1	CYLINDER BLOCK	BIMETAL	2PC
1-2	CYLINDER BLOCK	NON BUSH	2PC
2	VALVE PLATE-RH		1PC
3	VALVE PLATE-LH		1PC
4	PISTON ASS'Y	9PCS/SET	2SET
5	BALL GUIDE	STEEL/BRONZE	2PC
6	SPACER		2PC
7	SET PLATE		2PC
8	SPRING(CYLINDER)	9PCS/SET	2SET
9	TILTING PIN		2PC
10	SERVO PISTON		2PC
11	DRIVE SHAFT-LONG	K3V63DT 14T	1PC
11-1	DRIVE SHAFT-LONG	K3V112DT 12T/14T/17T	1PC
11-2	DRIVE SHAFT-LONG	K3V140, 180DT 14T/17T	1PC
12	DRIVE SHAFT-SHORT		1PC
13	SWASH PLATE		2PC
14	SUPPORT		2PC
15	SHOE PLATE		1PC



HT3V280DT

No.	DESCRIPTION	SPEC	QTY
1	CYLINDER BLOCK		1PC
2	VALVE PLATE		1PC
3	PISTON ASS'Y	9PCS/SET	1SET
4	BALL GUIDE		1PC
5	SET PLATE		1PC
6	SHOE PLATE		1PC
7	DRIVE SHAFT-F		1PC
8	DRIVE SHAFT-R		1PC



HT5V80/140DTP

No.	DESCRIPTION	SPEC	QTY
1	CYLINDER BLOCK	BUSH	2
1-1	CYLINDER BLOCK	BIMETAL	2
2	VALVE PLATE-RH		1
3	VALVE PLATE-LH		1
4	PISTON ASS'Y	9PCS/SET	2SET
5	BALL GUIDE	STEEL	2
6	SET PLATE		2
7	SPRING(CYLINDER)	9PCS/SET	2SET
8	TILTING PIN		2
9	SERVO PISTON		2
10	DRIVE SHAFT-LONG	12T	1
10-1	DRIVE SHAFT-LONG	K3V140DTP,K3V180TP	17T
11	DRIVE SHAFT-SHORT	13T	1
12	SWASH PLATE		2
13	SUPPORT		2
14	SHOE PLATE		1PC



HT5V160/200DTH

No.	DESCRIPTION	SPEC	QTY
1	CYLINDER BLOCK	BUSH	2PC
1-1	CYLINDER BLOCK	BIMETAL	2PC
2	VALVE PLATE-RH		1PC
3	VALVE PLATE-LH		1PC
4	PISTON ASS'Y	9PCS/SET	2SET
5	BALL GUIDE	STEEL	2PC
6	SET PLATE		2PC
7	SPRING(CYLINDER)	9PCS/SET	2SET
8	TILTING PIN		2PC
9	SERVO PISTON		2PC
10	DRIVE SHAFT-LONG	17T	2PC
11	DRIVE SHAFT-SHORT	13T	2PC
12	SWASH PLATE		2PC
13	SUPPORT		2PC



HT5V212DP

No.	DESCRIPTION	SPEC	Q'TY
1	CYLINDER BLOCK		1PC
2	VALVE PLATE-PIVOT TYPE		1PC
3	PISTON ASS'Y	9PCS/SET	1SET
4	BALL GUIDE		1PC
5	SET PLATE		1PC
6	SHOE PLATE		1PC
7	DRIVE SHAFT-F		1PC
8	DRIVE SHAFT-R		1PC



HT7V63DTP

No.	DESCRIPTION	SPEC	Q'TY
1	CYLINDER BLOCK		2PC
2	VALVE PLATE-RH		1PC
3	VALVE PLATE-LH		1PC
4	PISTON ASS'Y	9PCS/SET	2SET
5	BALL GUIDE		2PC
6	SET PLATE		2PC
7	SHOE PLATE		2PC
8	DRIVE SHAFT-LONG		1PC
9	DRIVE SHAFT-SHORT		1PC
10	SWASH PLATE		2PC
11	SUPPORT		2PC



50

HT7V100DTP

No.	DESCRIPTION	SPEC	Q'TY
1	BLOCK & VALVE PLATE-RH		1PC
2	BLOCK & VALVE PLATE-LH		1PC
3	PISTON ASS'Y	9PCS/SET	1SET
4	SET PLATE		1PC
5	BALL GUIDE		1PC
6	SHOE PLATE		1PC
7	SHAFT R-17T		1PC
8	SHAFT R-13T		1PC



HT7V125DTP

No.	DESCRIPTION	SPEC	Q'TY
1	BLOCK & VALVE PLATE-RH		1PC
2	BLOCK & VALVE PLATE-LH		1PC
3	PISTON ASS'Y	9PCS/SET	1SET
4	SET PLATE		1PC
5	BALL GUIDE		1PC
6	SHOE PLATE		1PC
7	SHAFT R-17T		1PC
8	SHAFT R-13T		1PC



51

K3SP30/36C

No.	DESCRIPTION	SPEC	Q'TY
1	CYLINDER BLOCK		1PC
2	VALVE PLATE		1PC
3	PISTON ASS'Y	10PCS/SET	1SET
4	BALL GUIDE		1PC
5	SET PLATE		1PC
6	SPRING(CYLINDER)	10PCS/SET	1SET
7	TILTING PIN		1PC
8	SERVO PISTON		1PC
9	DRIVE SHAFT	SINGLE 13T/252.5L	1PC
10	DRIVE SHAFT	DOUBLE 10T/280L	1PC
11	SWASH PLATE		1PC



K7SP36

No.	DESCRIPTION	SPEC	Q'TY
1	CYLINDER BLOCK		1PC
2	VALVE PLATE		1PC
3	PISTON ASS'Y	10PCS/SET	1SET
4	BALL GUIDE		1PC
5	SET PLATE		1PC
6	SHAFT		1PC



PSVD2-21E/27E

No.	DESCRIPTION	SPEC	Q'TY
1	CYLINDER BLOCK		1PC
2	VALVE PLATE		1PC
3	PISTON ASS'Y	10PCS/SET	1SET
4	BALL GUIDE		1PC
5	SET PLATE		1PC
6	PUSH ROD		1PC
7	DRIVE SHAFT		1PC



KVC925

No.	DESCRIPTION	SPEC	Q'TY
1	CYLINDER BLOCK		1PC
2	VALVE PLATE		1PC
3	PISTON ASS'Y	9PCS/SET	1SET
4	SET PLATE		1PC
5	SHOE PLATE		1PC
6	DRIVE SHAFT		1PC
7	AXLE SHAFT		2PC
8	AXLE BUSHING		2PC
9	FIX PLATE		2PC
10	GUIDE PIECE		1PC
11	GUIDE RING		1PC



PVD-2B-40

No.	DESCRIPTION	SPEC	QTY
1	CYLINDER BLOCK		1PC
2	VALVE PLATE		1PC
3	PISTON ASS'Y	11PCS/SET	1SET
4	BALL GUIDE		1PC
5	SET PLATE		1PC
6	DRIVE SHAFT		1PC
7	SWASH PLATE		1PC



PVK-2B-505

No.	DESCRIPTION	SPEC	QTY
1	CYLINDER BLOCK		1PC
2	VALVE PLATE		1PC
3	PISTON ASS'Y	11PCS/SET	1SET
4	BALL GUIDE		1PC
5	SET PLATE		1PC
6	DRIVE SHAFT		1PC
7	SWASH PLATE		1PC



LPD25-PI

No.	DESCRIPTION	SPEC	QTY
1	CYLINDER BLOCK		1PC
2	VALVE PLATE-PIVOT TYPE		1PC
3	PISTON ASS'Y	10PCS/SET	1SET
4	SET PLATE		1PC
5	BALL GUIDE		1PC
6	DRIVE SHAFT-PIVOT TYPE		1PC
7	CAM ROCKER-PIVOT TYPE		1PC
8	SWASH PLATE		1PC



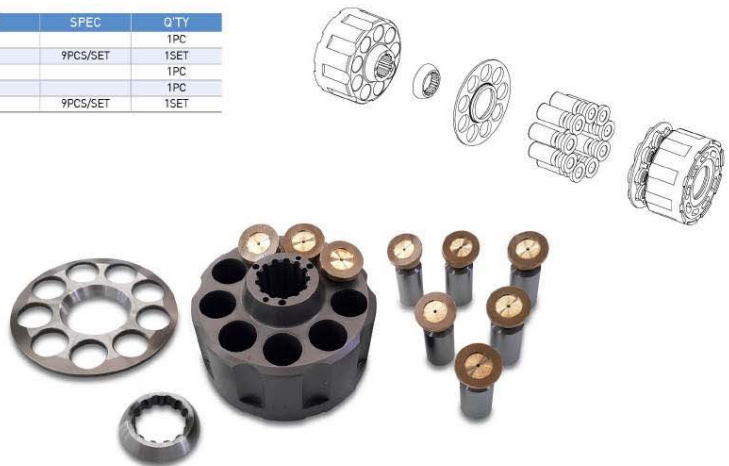
HPKO55K

No.	DESCRIPTION	SPEC	QTY
1	CYLINDER BLOCK		2PC
2	VALVE PLATE-RH		1PC
3	VALVE PLATE-LH		1PC
4	PISTON ASS'Y	9PCS/SET	2SET
5	BALL GUIDE		2PC
6	SET PLATE		2PC
7	SHOE PLATE		2PC
8	DRIVE SHAFT-LONG		1PC
9	DRIVE SHAFT-SHORT		1PC
10	SWASH & SUPPORT-RH		1PC
11	SWASH & SUPPORT-LH		1PC



PCL-200-18B

No.	DESCRIPTION	SPEC	Q'TY
1	CYLINDER BLOCK		1PC
2	PISTON ASS'Y	9PCS/SET	1SET
3	BALL GUIDE		1PC
4	SET PLATE		1PC
5	SPRING(CYLINDER)	9PCS/SET	1SET



HTMV16/21/23/40/44

No.	DESCRIPTION	SPEC	Q'TY
1	CYLINDER BLOCK		1PC
2	VALVE PLATE		1PC
3	PISTON ASS'Y	9PCS/SET	1SET
4	BALL GUIDE		1PC
5	SET PLATE		1PC
6	SPRING(CYLINDER)	9PCS/SET	1SET
7	DRIVE SHAFT		1PC
8	SWASH PLATE		1PC
9	SUPPORT		1PC



HTMV147

No.	DESCRIPTION	SPEC	Q'TY
1	CYLINDER BLOCK		1PC
2	VALVE PLATE		1PC
3	PISTON ASS'Y	9PCS/SET	1SET
4	BALL GUIDE		1PC
5	SET PLATE		1PC
6	SPRING(CYLINDER)	9PCS/SET	1SET
7	DRIVE SHAFT		1PC



HTMV155

No.	DESCRIPTION	SPEC	QTY
1	CYLINDER BLOCK		1PC
2	VALVE PLATE		1PC
3	PISTON ASS'Y	9PCS/SET	1SET
4	SET PLATE		1PC
5	BALL GUIDE		1PC
6	SPRING(CYLINDER)	9PCS/SET	1SET
7	DRIVE SHAFT		1PC
8	SWASH PLATE		1PC
9	SUPPORT		1PC



HMT36

No.	DESCRIPTION	SPEC	QTY
1	CYLINDER BLOCK		1PC
2	VALVE PLATE		1PC
3	PISTON ASS'Y	9PCS/SET	1SET
4	BALL GUIDE		1PC
5	SET PLATE		1PC
6	DRIVE SHAFT	20T NEW	1PC
7	DRIVE SHAFT	23T	1PC
8	SWASH PLATE		1PC



58

HMGF57LA/68A

No.	DESCRIPTION	SPEC	QTY
1	CYLINDER BLOCK		1PC
2	VALVE PLATE		1PC
3	PISTON ASS'Y	9PCS/SET	1SET
4	BALL GUIDE		1PC
5	SET PLATE		1PC
6	DRIVE SHAFT		1PC
7	SWASH PLATE		1PC



HTM05/15/17VA

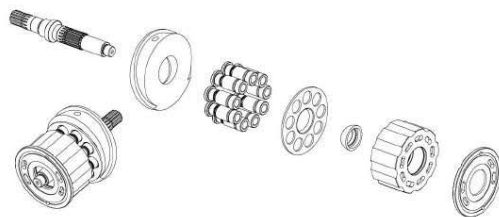
No.	DESCRIPTION	SPEC	QTY
1	CYLINDER BLOCK	BRONZE	1PC
2	VALVE PLATE		1PC
3	PISTON ASS'Y	9PCS/SET	1SET
4	BALL GUIDE		1PC
5	SET PLATE		1PC
6	SHOE PLATE		1PC
7	PI(CYLINDER)		3PC
8	SPRING(CYLINDER)		1PC
9	WASHER(CYLINDER)		2PC
10	COUPLING		1PC
11	DRIVE SHAFT		1PC
12	SWASH PLATE		1PC
13	FRICTION PLATE		2PC
14	SEPARATION PLATE		2PC



59

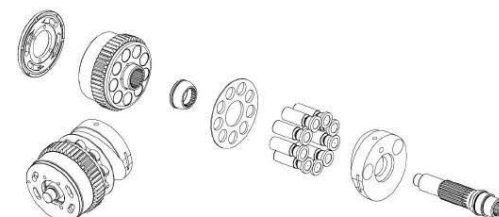
HTM06/07/09

No.	DESCRIPTION	SPEC	QTY
1	CYLINDER BLOCK	BRONZE	1PC
2	VALVE PLATE		1PC
3	PISTON ASS'Y	9PCS/SET	1SET
4	BALL GUIDE		1PC
5	SET PLATE		1PC
6	SHOE PLATE		1PC
7	PINICYLINDER		3PC
8	SPRING(CYLINDER)		1PC
9	WASHER(CYLINDER)		2PC
10	COUPLING		1PC
11	DRIVE SHAFT		1PC
12	SWASH PLATE		1PC
13	FRICION PLATE		2PC
14	SEPARATION PLATE		2PC



HTM10/18

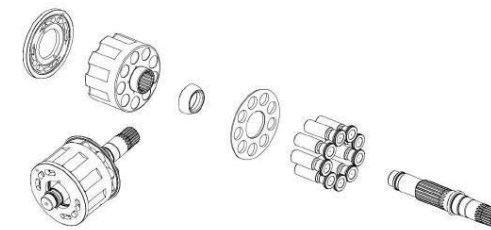
No.	DESCRIPTION	SPEC	QTY
1	CYLINDER BLOCK		1PC
2	VALVE PLATE		1PC
3	PISTON ASS'Y	9PCS/SET	1SET
4	BALL GUIDE	BRONZE	1PC
5	SPACER		1PC
6	SET PLATE		1PC
7	PINICYLINDER		5PC
8	SPRING(CYLINDER)		1PC
9	WASHER(CYLINDER)		2PC
10	COUPLING		1PC
11	DRIVE SHAFT		1PC
12	SWASH PLATE		1PC
13	FRICION PLATE		3PC
14	SEPARATION PLATE		3PC



60

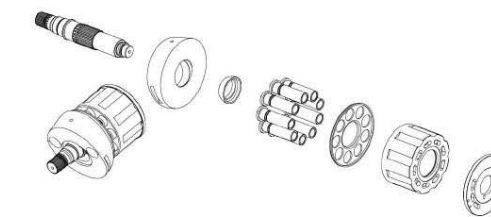
HTM35VL

No.	DESCRIPTION	SPEC	QTY
1	CYLINDER BLOCK		1PC
2	VALVE PLATE		1PC
3	PISTON ASS'Y	9PCS/SET	1SET
4	BALL GUIDE	BRONZE	1PC
5	SPACER		1PC
6	SET PLATE		1PC
7	PINICYLINDER		5PC
8	SPRING(CYLINDER)		1PC
9	WASHER(CYLINDER)		2PC
10	COUPLING		1PC
11	DRIVE SHAFT		1PC
12	SWASH PLATE		1PC
13	FRICION PLATE		2PC
14	SEPARATION PLATE		2PC



HTM35VA/40VC

No.	DESCRIPTION	SPEC	QTY
1	CYLINDER BLOCK	HTM40VC-BRONZE	1PC
2	VALVE PLATE		1PC
3	PISTON ASS'Y	9PCS/SET	1SET
4	BALL GUIDE		1PC
5	SET PLATE		1PC
6	SHOE PLATE		1PC
7	PINICYLINDER		6PC
8	SPRING(CYLINDER)		1PC
9	WASHER(CYLINDER)		2PC
10	COUPLING		1PC
11	DRIVE SHAFT		1PC
12	SWASH PLATE		1PC
13	FRICION PLATE		3PC
14	SEPARATION PLATE		4PC



61

HTM40VD(DX225LC)

No.	DESCRIPTION	SPEC	Q'TY
1	CYLINDER BLOCK		1PC
2	VALVE PLATE		1PC
3	PISTON ASS'Y	9PCS/SET	1SET
4	BALL GUIDE		1PC
5	SET PLATE		1v
6	SPRING(CYLINDER)	9PCS/SET	1SET
7	COUPLING		1PC
8	DRIVE SHAFT		1PC
9	SWASH PLATE		1PC
10	PIVOT		2PC
11	FRICITION PLATE		2PC
12	SEPARATION PLATE		2PC



R220LC-9

No.	DESCRIPTION	SPEC	Q'TY
1	CYLINDER BLOCK		1PC
2	VALVE PLATE		1PC
3	PISTON ASS'Y	9PCS/SET	1SET
4	BALL GUIDE		1PC
5	SET PLATE		1PC
6	DRIVE SHAFT		1PC



62

RMV173/R300

No.	DESCRIPTION	SPEC	Q'TY
1	CYLINDER BLOCK		1PC
2	VALVE PLATE		1PC
3	PISTON ASS'Y	9PCS/SET	1SET
4	BALL GUIDE		1PC
5	SET PLATE		1PC
6	SHAFT	18*19T	1PC



MSF170

No.	DESCRIPTION	SPEC	Q'TY
1	ROTOR		1PC
2	VALVE PLATE		1PC
3	PISTON ASS'Y	9PCS/SET	1SET
4	BALL GUIDE		1PC
5	SET PLATE		1PC
6	SHOE PLATE		1PC
7	DRIVE SHAFT		1PC



63

MSF340

No.	DESCRIPTION	SPEC	QTY
1	CYLINDER BLOCK		1PC
2	VALVE PLATE		1PC
3	PISTON ASS'Y	9PCS/SET	1SET
4	BALL GUIDE		1PC
5	SET PLATE		1PC
6	DRIVE SHAFT		1PC
7	SWASH PLATE		1PC



HTMV110

No.	DESCRIPTION	SPEC	QTY
1	CYLINDER BLOCK		1PC
2	PISTON ASS'Y	9PCS/SET	1SET
3	VALVE PLATE		1PC
4	SET PLATE		1PC
5	BALL GUIDE		1PC
6	CAM ROCKER		1PC
7	PIN OF CYLINDER BLOCK		1PC
8	SWASH PLATE		1PC



ZAXIS200

No.	DESCRIPTION	SPEC	QTY
1	CYLINDER BLOCK		1PC
2	VALVE PLATE		1PC
3	PISTON ASS'Y	9PCS/SET	1SET
4	BALL GUIDE		1PC
5	SET PLATE		1PC
6	DRIVE SHAFT	20T NEW	1PC
7	SWASH PLATE		1PC



MAG33

No.	DESCRIPTION	SPEC	QTY
1	CYLINDER BLOCK		1PC
2	VALVE PLATE		1PC
3	PISTON ASS'Y	9PCS/SET	1SET
4	SET PLATE		1PC
5	BALL GUIDE		1PC
6	DRIVE SHAFT		1PC
7	SWASH PLATE		1PC



MAG85

No.	DESCRIPTION	SPEC	QTY
1	CYLINDER BLOCK		1PC
2	VALVE PLATE		1PC
3	PISTON ASS'Y	9PCS/SET	1SET
4	SET PLATE		1PC
5	BALL GUIDE		1PC
6	DRIVE SHAFT		1PC
7	SWASH PLATE		1PC



HTMF29/43/64/68/72

No.	DESCRIPTION	SPEC	QTY
1	CYLINDER BLOCK		1PC
2	VALVE PLATE		1PC
3	PISTON ASS'Y	9PCS/SET	1SET
4	BALL GUIDE	BRONZE	1PC
5	SET PLATE		1PC
6	SHOE PLATE		1PC
7	SPRING(CYLINDER)	9PCS/SET	1SET
8	DRIVE SHAFT		1PC
9	FRICTION PLATE		1PC
10	SEPARATION PLATE		1PC



HTMF151

No.	DESCRIPTION	SPEC	QTY
1	CYLINDER BLOCK		1PC
2	VALVE PLATE		1PC
3	PISTON ASS'Y	9PCS/SET	1SET
4	BALL GUIDE	BRONZE	1PC
5	SET PLATE		1PC
6	SHOE PLATE		1PC
7	SPRING(CYLINDER)	9PCS/SET	1SET
8	DRIVE SHAFT		1PC
9	FRICTION PLATE		3PC
10	SEPARATION PLATE		3PC



HTMF195

No.	DESCRIPTION	SPEC	QTY
1	CYLINDER BLOCK		1PC
2	VALVE PLATE		1PC
3	PISTON ASS'Y	9PCS/SET	1SET
4	BALL GUIDE	BRONZE	1PC
5	SET PLATE		1PC
6	SHOE PLATE		1PC
7	SPRING(CYLINDER)	9PCS/SET	1SET
8	DRIVE SHAFT		1PC
9	FRICITION PLATE		3PC
10	SEPARATION PLATE		3PC



HTMF250

No.	DESCRIPTION	SPEC	QTY
1	CYLINDER BLOCK		1PC
2	VALVE PLATE		1PC
3	PISTON ASS'Y	9PCS/SET	1SET
4	BALL GUIDE	BRONZE	1PC
5	SET PLATE		1PC
6	SHOE PLATE		1PC
7	SPRING(CYLINDER)	9PCS/SET	1SET
8	DRIVE SHAFT		1PC
9	FRICITION PLATE		3PC
10	SEPARATION PLATE		3PC



68

KMF125

No.	DESCRIPTION	SPEC	QTY
1	CYLINDER BLOCK		1PC
2	VALVE PLATE		1PC
3	PISTON ASS'Y(ONE RING)	7PCS/SET	1SET
3-1	PISTON ASS'Y(TWO RING)	7PCS/SET	1SET
4	CENTER PIN		1PC
5	SET PLATE		1PC
6	DRIVE SHAFT		1PC



M2X63/96/120

No.	DESCRIPTION	SPEC	QTY
1	CYLINDER BLOCK		1PC
2	VALVE PLATE		1PC
3	PISTON ASS'Y	9PCS/SET	1SET
4	BALL GUIDE	STEEL	1PC
4-1	BALL GUIDE	M2X63	BRONZE
5	SPACER		1PC
6	SET PLATE		1PC
7	SHOE PLATE		1PC
8	PI(CYLINDER)		12PC
9	SPRING(CYLINDER)		1PC
10	WASHER(CYLINDER)		2PC
11	DRIVE SHAFT		1PC
13	FRICITION PLATE		2PC
14	SEPARATION PLATE		3PC



69

M2X146/150/170/210

No.	DESCRIPTION	SPEC	Q'TY
1	CYLINDER BLOCK		1PC
2	VALVE PLATE		1PC
3	PISTON ASS'Y	9PCS/SET	1SET
4	BALL GUIDE	STEEL	1PC
4-1	BALL GUIDE	M2X150/170	BRONZE
5	SPACER(BALL GUIDE)		1PC
6	SET PLATE		1PC
7	SHOE PLATE		1PC
8	PI(CYLINDER)		12PC
9	SPRING(CYLINDER)		1PC
10	WASHER(CYLINDER)		2PC
11	DRIVE SHAFT		1PC
13	FRICION PLATE		2PC
14	SEPARATION PLATE		3PC



M5X130/180

No.	DESCRIPTION	SPEC	Q'TY
1	CYLINDER BLOCK		1PC
2	VALVE PLATE		1PC
3	PISTON ASS'Y	9PCS/SET	1SET
4	SET PLATE		1PC
5	SHOE PLATE		1PC
6	DRIVE SHAFT	M5X130	19T/21T
7	DRIVE SHAFT	M5X180	13T/16T/21T
8	FRICION PLATE		2PC
9	SEPARATION PLATE		3PC



70

SG04/08/20

No.	DESCRIPTION	SPEC	Q'TY
1	CYLINDER BLOCK		1PC
2	VALVE PLATE		1PC
2-1	VALVE PLATE	SG08	2/4/6 HOLE
3	PISTON ASS'Y	9PCS/SET	1SET
4	SET PLATE		1PC
5	SPRING (SET PLATE)		1PC
6	SHOE PLATE		1PC
7	FRICION PLATE		2PC
8	SEPARATION PLATE		3PC



R140LC-9S

No.	DESCRIPTION	SPEC	Q'TY
1	CYLINDER BLOCK		1PC
2	VALVE PLATE		1PC
3	PISTON ASS'Y	9PCS/SET	1SET
4	BALL GUIDE		1PC
5	SET PLATE		1PC
6	DRIVE SHAFT		1PC



71

R220LC-9

No.	DESCRIPTION	SPEC	QTY
1	CYLINDER BLOCK		1PC
2	VALVE PLATE		1PC
3	PISTON ASS'Y	9PCS/SET	1SET
4	BALL GUIDE		1PC
5	SET PLATE		1PC
6	DRIVE SHAFT		1PC
7	SHOE PLATE		1PC



HMS072/067

No.	DESCRIPTION	SPEC	QTY
1	ROTOR		1PC
2	VALVE PLATE		1PC
3	PISTON ASS'Y	9PCS/SET	1SET
4	BALL GUIDE		1PC
5	SET PLATE		1PC
6	SHOE PLATE		1PC
7	DRIVE SHAFT		1PC



72

DX55/60(TSM32)

No.	DESCRIPTION	SPEC	QTY
1	CYLINDER BLOCK		1PC
2	PISTON ASS'Y	9PCS/SET	1SET
3	SET PLATE		1PC
4	SHOE PLATE		1PC
5	BALL GUIDE		1PC
6	VALVE PLATE		1PC
7	DRIVE SHAFT		1PC



DX140W(TSM86)

No.	DESCRIPTION	SPEC	QTY
1	CYLINDER BLOCK		1PC
2	VALVE PLATE		1PC
3	PISTON ASS'Y	9PCS/SET	1SET
4	BALL GUIDE		1PC
5	SET PLATE		1PC
6	DRIVE SHAFT		1PC



73

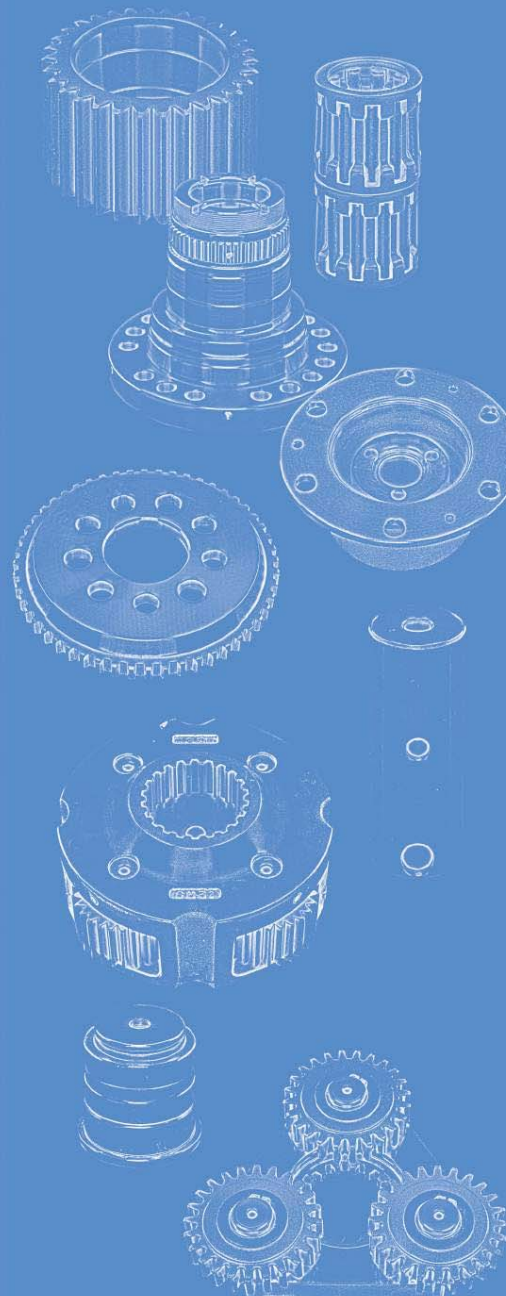
DX225LC(TSM140)

No.	DESCRIPTION	SPEC	QTY
1	CYLINDER BLOCK		1PC
2	VALVE PLATE		1PC
3	PISTON ASS'Y	9PCS/SET	1SET
4	BALL GUIDE		1PC
5	SET PLATE		1PC
6	SHOE PLATE		1PC
7	SPRING(CYLINDER)	9PCS/SET	1SET
8	DRIVE SHAFT		1PC



DX380(TSM280)

No.	DESCRIPTION	SPEC	QTY
1	CYLINDER BLOCK		1PC
2	VALVE PLATE		1PC
3	PISTON ASS'Y	9PCS/SET	1SET
4	BALL GUIDE		1PC
5	SET PLATE		1PC
6	SHOE PLATE		1PC
7	SHAFT		1PC



HUB GROUP

S55W-5/DX55W/R60W/MX3W-2

EW55B

R1400W-7

S120W

S130W-3/5 /R1300W-3

DX140W/R140W

MX6W

S200W-3/5

DX210W

TRAVEL GROUP

S300LC-5

S220LC-5(GM35VA)

DX225LC

S290LC-5

R220-7

R2200LC-7

EC210B

EC290B = EC360

ZAXIS200

PC200-8

SWING GROUP

S55

S130W-5/R1400W-7

S200W-3

S220LC-5

S220LC-7

S300LC-5

S330LC-5

R55

R210-7

R220-7

MX6W-2/RG045

MX8W-2/MX222

EC210B

EC360B

PC60-7

PC120-6

PC200-6

PC200-7

PC200-8

SK200-1

SK200-3/5/6

SK200-8

R60W-7 / S55W-5



CARRIER PLANET

ZTAM-00733/89006386
171.06.003.05/171.06.003.01
8220-06410

SUPPORT

ZTAM-00721/171.06.004.01
2.197-00070/7415006

RING GEAR

ZTAM-00722/171.06.005.02
171.06.005.01/59917583
2.403.00332

PLANET GEAR

ZTAM-00726/171.06.007.01
2.403-00328/59917625

BEARING

ZTAM-00727/005.13.1365
2.19-00305/8220-00850



PIN

ZTAM-00732/171.06.009.01
2.123-00263/8220-06460



DOUBLE JOINT

ZTAM-00738/278.06.611.03
2.138-00027/8220-08830



SHAFT REAR

ZTAM-00778/171.06.008.13
171.06.008.09/8220-06450



FORK JOINT

ZTAM-00738A



FORK DOUBLE SHIFT

ZTAM-00738C

EW55B / MX55



CARRIER PLANET

14503998

RING GEAR

7113-52300

SUPPORT

7113-52310

PLANET GEAR

7113-52420



BEARING

7113-524700B



PIN

14504000



DOUBLE JOINT

7113-52500



SHAFT REAR

7116-12100/14539324

R1400W-7



CARRIER PLANET

ZTAM-00579/ZTAM-00076
112.06.052.02

RING GEAR

ZTAM-00069/112.06.005.04

SUPPORT

ZTAM-00070/112.06.007.07

PLANET GEAR

ZTAM-00072/112.06.006.03



BEARING

ZTAM-00073/112.06.008.02



DOUBLE JOINT

ZTAM-00509/212.06.610.03



SHAFT REAR

ZTAM-00114/112.06.002.01



FORK JOINT

ZTAM-00509A



FORK DOUBLE SHIFT

ZTAM-00509C

S120W



RING GEAR

4472.319.099.182 #

PLANET GEAR

4472.353.463

ROLLER BEARING

0750.118.072



SUN GEAR-FRONT

4472.373.190



SUN GEAR-REAR

4472.319.095

S130W-3/5/R1300W-3



CARRIER PLANET

4472 386 005



RING GEAR

4472 319 218 180 f
4472 319 166 182 f S130W



HUB

4472 373 226



HUB CARRIER ; SPINDLE

4472 219 050



HUB NUT



DISC CARRIER REAR

4472 322 013



DISC CARRIER FRONT

4472 377 037



PLANET GEAR

4472 364 006/4472 364 264



ROLLER BEARING

0735 455 281 (OLD)
0735 455 323 (NEW)



SUN GEAR FRONT

4472 319 157



SUN GEAR REAR

4472 319 161



ANGLE RING

0501 309 954

MX6W-2



RING GEAR

7114-17500



PLANET GEAR

7114-12710/145-46564



SUN GEAR REAR

7116-12100/14539324

DX140W/R140W



CARRIER PLANET ASS'Y(OLD)

ZGAQ-02931
K9001545(OLD)
K9001546 CARRIER ONLY(OLD)



CARRIER PLANET ASS'Y(NEW)

ZGAQ-02931
100502-001300(NEW)



RING GEAR

ZGAQ-02920
K9001535/130422-00021



PLANET GEAR(OLD)

K9001547/4472 347 008



PLANET GEAR(NEW)

ZGAQ-02933/130413-00005



ROLLER BEARING(OLD)

1.109-00089/0735 455 281



ROLLER BEARING(NEW)

ZGAQ-03163
140107-00072/0735 455 323



SUN GEAR RR

ZGAQ-02951/K9001556



ANGLE RING

1.115-00178/0501 309 954



RETAINER RING

1.115-00038/0630 501 029



RETAINER RING

ZGAQ-02935/111104-00086

S200W-3/5



PLANET GEAR

4472 320 096/4472 319 095
4472 319 072/ZGAQ-01306



SUN GEAR FR

4472 375 005/ZGAQ-01321



SUN GEAR RR

4472 321 007



PLANET GEAR

ZGAQ-02326
K9004164/4472 348 032



RING GEAR

ZGAQ-0221 1/K90041671
4472 348 049



SUN GEAR RR

ZGAQ-03208/ZGAQ-02204
K9004163/4472 348 028

S55W-5 / R60W-7



CARRIER ASS'Y NO.1



CARRIER ASS'Y NO.2



SUN GEAR NO.1



PLANET GEAR NO.1



PIN NO.1



BEARING NO.1



SUN GEAR NO.2



PLANET GEAR NO.2



PIN NO.2

S130W-5/R140W-7



CARRIER ASS'Y NO.1

XKAQ-00271/230-00018KT



CARRIER ASS'Y NO.2

XKAQ-00272/230-00017KT



RING GEAR

XKAQ-00102/104-00019



PINION SHAFT(DOOSAN)

405-00006



PINION SHAFT(HYUNDAI)

XKAQ-00249



SUN GEAR NO.1

XKAQ-00277/404-00066



PLANET GEAR NO.1

XKAQ-00099/404-00065



PIN NO.1

XKAQ-00094/123-00095



SUN GEAR NO.2 (DOOSAN)

404-00064



SUN GEAR NO.2(HYUNDAI)

XKAQ-00278



PLANET GEAR NO.2

XKAQ-00101/404-00063



PIN NO.2

XKAQ-00095/123-00094

S200W-3



CARRIER ASS'Y NO.1

2230-1016KT



CARRIER ASS'Y NO.2

2230-1029KT



RING GEAR

2104-1011



SUN GEAR NO.1

2101-1012



PLANET GEAR NO.1

2101-1011



NEEDLE BEARING

2216-9001



PIN NO.1

2123-1632



SUN GEAR NO.2

2101-1010



PLANET GEAR NO.2

2101-1009



PIN ASS'Y NO.2

2123-1638

S220LC-5



CARRIER ASS'Y NO.1

230-00050



CARRIER ASS'Y NO.2

230-00051



RING GEAR

2104-1013



SUN GEAR NO.1

2104-1019



PLANET GEAR NO.1

2104-1020



PIN NO.1

2123-2327



SUN GEAR NO.2

2104-1021



PLANET GEAR NO.2

2104-1022



PIN NO.2

2123-2322



BUSHING NO.2

2110-1371



CENTER WASHER

2114-1902

S220LC-7/S225LC-7/DH225LC-7/DX225



CARRIER ASSY NO.1 K9006810/K9008337 230-00060 CARRIER ONLY	CARRIER ASSY NO.2 K9006811/K9008338 230-00061 CARRIER ONLY	RING GEAR 104-00051/130422-00001 K1038210	SUN GEAR NO.1 104-00047/130425-00001	PLANET GEAR NO.1 104-00049
---	---	--	--	--------------------------------------



PIN NO.1 123-00435	SUN GEAR NO.2 104-00048	PLANET GEAR NO.2 104-00050	PIN NO.2 123-00437/K1038208	BUSHING NO.2 110-00219
------------------------------	-----------------------------------	--------------------------------------	---------------------------------------	----------------------------------

S300LC-5



CARRIER ASSY NO.1 230-00066	CARRIER ASSY NO.2 230-00067	RING GEAR 104-00046	SUN GEAR NO.1 101-00024	PLANET GEAR NO.1 104-00041
---------------------------------------	---------------------------------------	-------------------------------	-----------------------------------	--------------------------------------



PIN NO.1 123-00457	PINION GEAR 404-00052	SUN GEAR NO.2 104-00045	PLANET GEAR NO.2 104-00044	PIN ASSY NO.2 123-00471	BUSHING NO.2 110-000231
------------------------------	---------------------------------	-----------------------------------	--------------------------------------	-----------------------------------	-----------------------------------

S330LC-5



CARRIER ASSY NO.1(3P) 230-00064	CARRIER ASSY NO.1(4P) 230-00068	CARRIER ASSY NO.2 230-00065	RING GEAR 104-00040
---	---	---------------------------------------	-------------------------------



SUN GEAR NO.1(3P) 22T 104-00038	SUN GEAR NO.1(4P) 19T 104-00043	PLANET GEAR NO.1 104-00042	PIN NO.1 125051-00457
---	---	--------------------------------------	---------------------------------



PINION GEAR 2404-1065	SUN GEAR NO.2 104-00039	PLANET GEAR NO.2 104-00037	PIN ASSY NO.2 123-00459	BUSHING NO.2 100-00228
---------------------------------	-----------------------------------	--------------------------------------	-----------------------------------	----------------------------------

R55



CARRIER ASSY NO.1 XKBR-00010	CARRIER ASSY NO.2 XKBR-00012	SUN GEAR NO.1 XKBR-00009	PLANET GEAR NO.1 XKBR-00021	SUN GEAR NO.2 XKBR-00007	PLANET GEAR NO.2 XKBR-00028
--	--	------------------------------------	---------------------------------------	------------------------------------	---------------------------------------

R210LC-7 / S200W-3



CARRIER ASSY NO.1 XKAQ-00754 / XKAQ-00266/268 XKAQ-00015 CARRIER ONLY	CARRIER ASSY NO.2 XKAQ-00753/XKAQ-00270 XKAQ-00075 CARRIER ONLY	RING GEAR XKAQ-00073	SUN GEAR NO.1 16T XKAQ-00010/XKAQ-00648	SUN GEAR NO.1 13T XKAQ-00067	PLANET GEAR NO.1 XKAQ-00025
--	--	--------------------------------	---	--	---------------------------------------



NEEDLE BEARING XKAQ-00030	PIN NO.1 XKAQ-00019	PINION GEAR XKAQ-00014	SUN GEAR NO.2 XKAQ-00011	PLANET GEAR NO.2 XKAQ-00023	PIN ASSY NO.2 XKAQ-00070
-------------------------------------	-------------------------------	----------------------------------	------------------------------------	---------------------------------------	------------------------------------

R220-7 S/M



CARRIER ASSY NO.1 39Q6-12250	CARRIER ASSY NO.2 39Q6-12180	SUN GEAR NO.1 39Q6-12320	SUN GEAR NO.2 39Q6-12240
--	--	------------------------------------	------------------------------------



PLANET GEAR NO.2	PIN NO.1	PIN NO.2
-------------------------	-----------------	-----------------

MX6W-2/RG04S



CARRIER ASSY NO.1 7513-046KT	CARRIER ASSY NO.2 7513-043KT	RING GEAR 7514-183	SUN GEAR NO.1 7514-184	PLANET GEAR NO.1 7514-186
--	--	------------------------------	----------------------------------	-------------------------------------



PIN NO.1 7510-001	SUN GEAR NO.2 7514-188	PLANET GEAR NO.2 7514-189	PIN NO.2 7509-155	BUSHING NO.2 7591-009
-----------------------------	----------------------------------	-------------------------------------	-----------------------------	---------------------------------

MX8W-2/MX222



CARRIER ASSY NO.1 7118-00560	CARRIER ASSY NO.2 7118-01771	RING GEAR 7118-00220	SUN GEAR NO.1 7118-00200	PLANET GEAR NO.1 7118-00191
--	--	--------------------------------	------------------------------------	---------------------------------------



PIN ASSY NO.1 7118-00630	SUN GEAR NO.2 7118-00091	PLANET GEAR NO.2 7118-00121	PIN NO.2 7118-00140	BUSHING NO.2 7118-00130
------------------------------------	------------------------------------	---------------------------------------	-------------------------------	-----------------------------------

EC210B



CARRIER ASSY NO.1

7118-30400/14528725
7118-30410 CARRIER ONLY



CARRIER ASSY NO.2

7118-30200
7118-30210 CARRIER ONLY



RING GEAR

7118-30350



SUN GEAR NO.1

7118-30490



PLANET GEAR NO.1

7118-30420



PIN NO.1

7118-30430



BEARING NO.1

7118-30440/14550879



SUN GEAR NO.2

7118-30390



PLANET GEAR NO.2

7118-30220



PIN ASSY NO.2

7118-30230

EC360B



CARRIER ASSY NO.1

8230-22850/14619956



CARRIER ASSY NO.2

8230-22660KT/14596614



RING GEAR

8230-22750



PINION GEAR

1055-00481



SUN GEAR NO.1

8230-22760



PLANET GEAR NO.1

8230-22770



PIN NO.1

8230-22600



SUN GEAR NO.2

8230-22790/14596620



PLANET GEAR NO.2

8230-22780/14596616



PIN NO.2

8230-22570



BUSH NO.2

8230-22880

PC60-7



CARRIER ASSY NO.1

201-26-71120



CARRIER ASSY NO.2

201-26-71130



RING GEAR

201-26-71190



PINION SHAFT

201-26-71140



SUN GEAR NO.1

201-26-71150



PLANET GEAR NO.1

201-26-71160



PIN NO.1

201-26-71220



BEARING NO.1

201-26-71290



SUN GEAR NO.2

201-26-71170



PLANET GEAR NO.2

201-26-71180



PIN NO.2

201-26-71230



BEARING NO.2

424-15-12-12580

PC120-6



CARRIER ASSY NO.1

203-26-61120



CARRIER ASSY NO.2

203-26-61130



SUN GEAR NO.1

203-26-61150



PLANET GEAR NO.1

203-26-61160



PIN NO.1

201-26-62240



BEARING NO.1

201-26-62270



PINION SHAFT

203-26-61220



SUN GEAR NO.2

201-26-61170



PLANET GEAR NO.2

203-26-61180



PIN NO.2

201-26-61250



BEARING NO.2

201-26-61270

PC200-6



CARRIER ASSY NO.1
20Y-26-22160



CARRIER ASSY NO.2
20Y-26-22170



SUN GEAR NO.1 22/19T
20Y-26-22110



PLANET GEAR NO.1 39T
20Y-26-22120



PIN NO.1
20Y-26-22240



BEARING NO.1
20Y-26-21280



PINION SHAFT
20Y-26-21141



SUN GEAR NO.2
20Y-26-22131



PLANET GEAR NO.2
20Y-26-22150



PIN NO.2
20Y-26-22250



BEARING NO.2
20G-26-11240

PC200-7



CARRIER ASSY NO.1
22U-26-21570



CARRIER ASSY NO.2
22U-26-21580



SUN GEAR NO.1
22U-26-21510



PLANET GEAR NO.1
22U-26-21520



PIN NO.1
20G-26-11240



BEARING NO.1
20Y-26-21281



PINION SHAFT
22U-26-21560



SUN GEAR NO.2
22U-26-21530



PLANET GEAR NO.2
22U-26-21540



PIN NO.2
20Y-27-21280



BEARING NO.2
20G-26-11240

PC200-8



CARRIER ASSY NO.1
22U-26-21572KT



CARRIER ASSY NO.2
22U-26-21580KT



SUN GEAR NO.1
22U-26-21510



PLANET GEAR NO.1
22U-26-21520



PIN NO.1
22U-26-21210



BEARING NO.1
20Y-26-21281



PINION SHAFT
20G-26-69111



SUN GEAR NO.2
22U-26-21530



PLANET GEAR NO.2
22U-26-21540



PIN NO.2
20Y-26-22250



BEARING NO.2
20G-26-11241

SK200-1



CARRIER ASSY NO.1
2413N4G2F1



CARRIER ASSY NO.2
2413J381



SUN GEAR NO.1
2401P1276



PLANET GEAR NO.1
2401P1277



PIN NO.1
20G-26-11240



BUSHING NO.1
2401P1278



SUN GEAR NO.2
2401P1278



PLANET GEAR NO.2
2401P1279



PIN NO.2
20G-26-11240



BUSHING NO.2
20G-26-11240

SK200-3/5/6



CARRIER ASS'Y NO.1
YN32W01019F1



CARRIER ASS'Y NO.2
YN32W01011P1



SUN GEAR NO.1
YN32W01007P1



PLANET GEAR NO.1
YN32W01002P1



PIN NO.1



BUSHING NO.1



SUN GEAR NO.2
YN32W0106P1



PLANET GEAR NO.2
YN32W01008P1



PIN NO.2



BUSHING NO.2

SK200-8



CARRIER ASS'Y NO.1



CARRIER ASS'Y NO.2



SUN GEAR NO.1



PLANET GEAR NO.1



PIN NO.1



BEARING NO.1



SUN GEAR NO.2



PLANET GEAR NO.2



PIN NO.2



BUSHING NO.2

S300LC-5



CARRIER ASS'Y NO.1
K1003027



CARRIER ASS'Y NO.2
K1003028



CARRIER ASS'Y NO.3
K1003029



PLANET GEAR NO.1
K9000799



PLANET GEAR NO.2
K9000795



PLANET GEAR NO.3
K9000791



SUN GEAR NO.1
K9000802



SUN GEAR NO.2
K9000798



SUN GEAR NO.3
K9000794



PIN NO.1
K9000801



PIN NO.2
K9000797



BEARING NO.2



PIN NO.3
K9000793



BEARING NO.3

S220LC-5(GM35VA)



CARRIER/CARRIER ASS'Y
112567A/XKAH-00449 & 11256KT



RING GEAR A
119807/XKAH-00448



RING GEAR B
119808(S5T)/XKAH-00447



COUPLING GEAR
112566A/XKAH-00444



COUPLING
107589/XKAH-00022



SUN GEAR
119537/XKAH-00445



CLUSTER GEAR
119536(I9T)/XKAH-00446



CLUSTER PIN
112568A.124156A
XKAH-00443



NEEDLE BEARING
211563/XKAH-00433



THRUST COLLAR
119884/XKAH-00440

DX225LC(GM40VC)



CARRIER / CARRIER ASS'Y 1.230-00054 XKAH-00909/143527 & 1.230-00053/XKAH-00908	RING GEAR A 1.104-00001/XKAH-00904	RING GEAR B 1.104-00003(56T) XKAH-00914/143530	COUPLING GEAR 1.404-00002 XKAH-00907/143529	COUPLING 1.414-00009/XKAH-00907	SUN GEAR 1.403-00111/XKAH-00445
--	--	---	--	---	---



CLUSTER GEAR 1.404-00007(20T) XKAH-00910/143528	CLUSTER PIN 1.405-00121 XKAH-00911/143526	THRUST COLLAR 1.114-00541/XKAH-00912	DRIVE GEAR K9007390	SUN GEAR NO.2 K9007391	NEEDLE BEARING 1.109-00145/XKAH-00913
--	--	--	-------------------------------	----------------------------------	---

R220-7 T/M



CARRIER ASS'Y NO.1 39Q6-42250	CARRIER ASS'Y NO.2 39Q6-42180	SUN GEAR NO.1 39Q6-42310	SUN GEAR NO.2 39Q6-42240
---	---	------------------------------------	------------------------------------



COUPLING 39Q6-42170	PLANET GEAR NO.1	PLANET GEAR NO.2	PIN NO.1	PIN NO.2
-------------------------------	-------------------------	-------------------------	-----------------	-----------------

R2200LC-7



CARRIER ASS'Y NO.1 XKAQ-00233 XKAQ-00234 CARRIER ONLY	CARRIER ASS'Y NO.2 XKAQ-00226	SUN GEAR NO.1 XKAQ-00242	PLANET GEAR NO.1 XKAQ-00237	PIN NO.1 XKAQ-00240
--	---	------------------------------------	---------------------------------------	-------------------------------



BEARING NO.1 XKAQ-00238	SUN GEAR NO.2 XKAQ-00235	PLANET GEAR NO.2 XKAQ-00228	PIN NO.2 XKAQ-00231	BEARING NO.2 XKAQ-00229
-----------------------------------	------------------------------------	---------------------------------------	-------------------------------	-----------------------------------

R3000LC-7



CARRIER ASS'Y NO.1 XKAQ-00197, XKAQ-00400	CARRIER ASS'Y NO.2 XKAQ-00188, XKAQ-00395, XKAQ-00690, XKAQ-00974	CARRIER ASS'Y NO.3 XKAQ-00175, XKAQ-00398, XKAQ-00965	SUN GEAR NO.1 XKAQ-00203	SUN GEAR NO.2 XKAQ-00195	SUN GEAR NO.3 XKAQ-00186
---	--	--	------------------------------------	------------------------------------	------------------------------------



PLANET GEAR NO.1 XKAQ-00199	PLANET GEAR NO.2 XKAQ-00190, XKAQ-00392	PLANET GEAR NO.3 XKAQ-00181, XKAQ-00389	PIN NO.1 XKAQ-00202	PIN NO.2 XKAQ-00193	PIN NO.3 XKAQ-00184
---------------------------------------	---	---	-------------------------------	-------------------------------	-------------------------------

R3700LC-7(GM50/60)



CARRIER ASS'Y NO.1 XKAQ-00197, XKAQ-00400	CARRIER ASS'Y NO.2 XKAQ-00188, XKAQ-00399, XKAQ-00690, XKAQ-00974	PLANET GEAR NO.1 XKAQ-00199	PLANET GEAR NO.2 XKAQ-00190, XKAQ-00392	PLANET GEAR NO.3 XKAQ-00181, XKAQ-00389
---	--	---------------------------------------	---	---



BEARING NO.1	BEARING NO.2	SUN GEAR NO.1 XKAQ-00203	SUN GEAR NO.2 XKAQ-00195	SUN GEAR NO.3 XKAQ-00186	PIN NO.2 XKAQ-00193
---------------------	---------------------	------------------------------------	------------------------------------	------------------------------------	-------------------------------

EC210B



CARRIER ASS'Y NO.1 7117-30270/14528727	CARRIER ASS'Y NO.2 7117-30200/14528723	SUN GEAR NO.1 7117-30330	PLANET GEAR NO.1 7117-30340	PIN NO.1 7117-30360
--	--	------------------------------------	---------------------------------------	-------------------------------



BEARING NO.1 7117-30320	SUN GEAR NO.2 7117-30290	PLANET GEAR NO.2 7117-30240	PIN NO.2 7117-30250	BEARING NO.2 7117-30230	COUPLING
-----------------------------------	------------------------------------	---------------------------------------	-------------------------------	-----------------------------------	-----------------

EC290B



CARRIER ASS'Y NO.1 7117-38201	CARRIER ASS'Y NO.2 7117-38210	SUN GEAR NO.1 7117-38371	SUN GEAR NO.2 7117-38400	SUN GEAR NO.3 7117-38330
---	---	------------------------------------	------------------------------------	------------------------------------



PLANET GEAR NO.1 7117-38431	PLANET GEAR NO.2 7117-38350	PIN NO.1	PIN NO.2	BEARING NO.1	BEARING NO.2
---------------------------------------	---------------------------------------	-----------------	-----------------	---------------------	---------------------

PC200-8



CARRIER ASS'Y NO.1	CARRIER ASS'Y NO.2	SUN GEAR NO.2 20Y-27-41120
---------------------------	---------------------------	--------------------------------------



PLANET GEAR NO.1 20Y-27-22120	PLANET GEAR NO.2 20Y-27-41130	PIN NO.1	PIN NO.2
---	---	-----------------	-----------------

ZAXIS200



CARRIER ASS'Y NO.1(OLD)
1025826



CARRIER ASS'Y NO.1(NEW)
2050691



CARRIER ASS'Y NO.2
2042432



SUN GEAR NO.1(OLD)
2042351 (25*20T)



SUN GEAR NO.1 (NEW)
2050692 (25*23T)



PLANET GEAR NO.1(OLD)
3082148 (21T)



PLANET GEAR NO.1(NEW)
3100544 (23T)



PIN NO.1
1025826



BEARING NO.1
4387383



SUN GEAR NO.2
3082149 (20*22T)



PLANET GEAR NO.2
3082155 (21T)



PIN NO.2
4402086



BEARING NO.2
4438592

EX120 / ZAXIS120



SUN GEAR NO.1
2022131



SUN GEAR NO.2
2078644
2022128

HITACHI GEAR

EX200/ZAXIS200



GEAR SHAFT
3055594 (18*10T)



DRIVE GEAR
3063840 (34*18T)



DRIVE GEAR(LH)
3063842 (34*19T)



DRIVE GEAR(RH)
3063843 (34*19T)

EX300/ZAXIS300



CENTER GEAR
3089266 (39*19T)



DRIVE GEAR
3035852 (37*19T)



DRIVE GEAR
3035853 (39*15T)



GEAR PUMP SHAFT
3038090 (15*19*10T)

EX330/ZAXIS330



DRIVE GEAR
3104555



DRIVE GEAR
3104554

REDUCTION GEAR

MODEL	DIVISION	PART NO.	DESCRIPTION	SPEC.
S340-5 R3700LC-7 GM50/60/70	T/M	404-00080, 132983	SUN GEAR NO.1	26*14T*D115.8*20L
	T/M	404-00081, XKAH-00993, 132984	SUN GEAR NO.2	23T*D102.3*61L
	T/M	404-00082A, 132985	SUN GEAR NO.3	25T*D139.9*91L
	T/M	1.403-00061, 132974	PLANET GEAR NO.1	24T*D108.3*28L
	T/M	1.403-00065, XKAH-00996, 135392	PLANET GEAR NO.2	26T*D115.6*32L
	T/M	104-00036, XKAH-00997, 132980	PLANET GEAR NO.3	22T*D125.5*55L
HTM06	T/M		DRIVE GEAR	14*10T*72.5L
	T/M		PLANET GEAR-F	39T*D82.4*33L
	T/M		PLANET GEAR-R	43T*D90.8*17L
GM09	T/M		SUN GEAR	18T*D42.4*50.5L
	T/M	121315	THRUST WASHER (P/L GEAR)	46*64.5*3T
	T/M	121317	SUN GEAR	17T*48.5L
	T/M	121313	PLANET GEAR-F	33T*29.5L
	T/M	121319	PLANET GEAR-R	36T*21L
GM09, PC60-7, PC78	T/M	121320	DRIVE GEAR	10*14T*111.5L
	T/M		CENTER GEAR SHAFT	14*14T*74L
GM09, PC60-6(SK60)	T/M		CENTER GEAR	14*14T*D42.3*16.5L
	T/M		CENTER GEAR	16*14T*D42*16.5L
	T/M		CENTER GEAR	16*14T*D46.1*20L
	T/M		CENTER GEAR	15*14T*D43.2*19.9L
GM17	T/M		CENTER GEAR	32*18T*D83.7*14L
	T/M		CENTER GEAR	38*18T*D87.5*14L
	T/M		CENTER GEAR	39*18T*D89.7*14L
	T/M		CRANK SHAFT	18T*118L
	T/M		CENTER GEAR	34*18T*D90.4*14L
	T/M	TZ22581132-01	COUPLING	D28.8*41.5L, 14T
GM17, GM18, PC120-5, PC120-6, SK120	T/M	5C0707	CENTER GEAR	14*15T*D63.6*21.6L
	T/M	5C0703	CENTER GEAR	15*15T*D57.8*21.6L
	T/M		CENTER GEAR	16*15T*D61*21.6L
GM17, GM18, PC60-6(SK60)	T/M		CENTER GEAR	27*26T*D93*20L
	T/M		CENTER GEAR	26*26T*D89.8*20L
	T/M		PLANET GEAR-F	31T*43.5L
	T/M		PLANET GEAR-R	35T*21L
	T/M		DRIVE GEAR	10*14T*131L
GM18	T/M		SUN GEAR	16T*64.5L
	T/M		THRUST WASHER (P/L GEAR)	56*74*5T
	T/M		CENTER GEAR	22*26T*D91.8*20L
	T/M		CENTER GEAR	38*26T*D102*20L
	T/M	5C0712	CENTER GEAR	43*26T*D104.2*20L
	T/M	5C0708	CENTER GEAR	44*26T*D106.3*20L
	T/M	5C0714, 263B1007-00	CENTER GEAR	45*26T*D108.5*20L
	T/M		T/GEAR	13*14T*71L
	T/M		T/GEAR	17*14T*71L
	T/M		T/GEAR	16*14T*71L
GM18, PC120-5(SK120) PC120-5(SK120)	T/M		T/GEAR	15*16T*78L
	T/M		T/GEAR	16*16T*78L
	T/M		T/GEAR	15*16T*78L
	T/M		T/GEAR	16*16T*D43.1*78L (M2.25)
GM17, GM18, PC120-5, PC120-6, SK120	T/M		T/GEAR	15*14T*71L
GM18, HTM18, PC120-5, PC120-6, SK120	T/M		CENTER GEAR	26*26T*D89.8*20L
GM24VA	T/M	116970, XKAH-00360	COUPLING GEAR	56T*41L
	T/M	215811, XKAH-00349	SUN GEAR	8*21T*109.5L
	T/M	215810A, XKAH-00355	CLUSTER GEAR	28*20T*104L
GM35VA	T/M	119536, XKAH-00446	CLUSTER GEAR	28*19T*122L
	T/M	112566A, XKAH-00444	COUPLING GEAR	55T*44.5L
	T/M	119808, XKAH-00447	RING GEAR-B	55T*88L

REDUCTION GEAR

MODEL	DIVISION	PART NO.	DESCRIPTION	SPEC.	
GM35VL	T/M	133593, 718551	CENTER GEAR	30*30T*D138.3*30L	
	T/M	133596	CENTER GEAR	43*30T*D125.1*30L (M2.75)	
	T/M	133594A	T/GEAR	12*21T*106.5L	
	T/M		T/GEAR	16*21T*106.5L	
	T/M	133592	T/GEAR	17*21T*106.5L	
	T/M	131140, XKAH-00017	T/GEAR	18*21T*106.5L	
	T/M	131143	T/GEAR	20*21T*106.5L	
	T/M	131147	T/GEAR	23*21T*106.5L	
	T/M	133595	CENTER GEAR	40*30T*D127.7*30L	
	T/M	131138, XKAH-00019	CENTER GEAR	42*30T*D133.9*30L	
GM40VC	T/M	133597, YHDH-4	CENTER GEAR	43*30T*D136.9*30L (M3)	
	T/M		CENTER GEAR	44*30T*D140.9*30L	
	T/M	119537, 1.403-00111, XKAH-00445	SUN GEAR	8*21T*123.6L	
	T/M	131134, XKAH-00013	CRANK SHAFT	30T*197L	
	T/M	143528, XKAH-00910, 1.404-00007	CLUSTER GEAR	28*20T*122L	
	T/M	1.404-00002, 143529, XKAH-00907	COUPLING GEAR	56T*44.5L	
	DX225LC / GM40VD	T/M	K9007390	DRIVE GEAR	11*20T*212.4L
		T/M	K9007391	SUN GEAR NO.2	18T*95L
	JMV016	T/M		DRIVE GEAR	11*12T*D28.3*93L
		T/M		PLANET GEAR-F	26T*D56.7*30L
T/M			PLANET GEAR-R	27T*D58.55*15.1L	
JMV16/21/23	T/M		SUN GEAR	13T*D32.6*44.4L	
	T/M		DRIVE GEAR	10*12T*92L	
	T/M		PLANET GEAR-F	32T*D69.05*28L	
	T/M		PLANET GEAR-R	36T*D76.7*17L	
JMV40, JMV44	T/M		SUN GEAR	17T*D39*44.5L	
	T/M	XXAY-00404	DRIVE GEAR	10*14T*111.7L	
	T/M	XXAY-00397	SUN GEAR NO.2	17T*D48.5*48.5L	
MAG33	T/M		PLANET GEAR-F	39T*D81.3*30L	
	T/M		PLANET GEAR-R	41T*D86.3*17.2L	
	T/M		SUN GEAR	19T*D42.3*45L	
	T/M		DRIVE GEAR	14*16T*D32.2*94L	
MAG85	T/M		DRIVE GEAR	8*18T*89.5L	
	T/M		PLANET GEAR NO.1		
	T/M		PLANET GEAR NO.2		
	T/M		SUN GEAR	12*17T	
PC28, PC30 PC40-5 PC50	T/M		SUN GEAR NO.2		
	T/M		CENTER GEAR	12*12T*D30.3*14.2L	
PC60-3, PC60-5, SK03	T/M		CENTER GEAR	18*14T*D36.35*15.3L	
	T/M		CENTER GEAR	17*14T*D39.95*15L	
PC200-6	T/M		CENTER GEAR	25*18T*D83*14.4L	
	T/M		CENTER GEAR	14*14T*D49.1*20L	
PC200-7, PC200-8(MO) PC200-8	T/M		DRIVE GEAR (NEW)	10*18T*213.5L	
	T/M		DRIVE GEAR (OLD)	12*22T*235L	
PC400-7	T/M		RING GEAR	101T*105L	
	T/M		RING GEAR	101T*105L	
S130W S150	T/M	20Y-27-31210, 20Y-27-42510	DRIVE GEAR	10*18T*219L	
	T/M	20Y-27-41110	DRIVE GEAR	10*18T*205.5L	
R170W-5, S180W-5	T/M		DRIVE GEAR	10*18T*222.1L	
	T/M		BEVEL GEAR	GEAR 17T (INSIDE 13T)	
DX380	T/M		BEVEL GEAR	GEAR 26T (INSIDE 20T)	
	T/M		PLANET GEAR	36T*D58.25*28.9L	
K5V200DPH	T/M	4143-315-024	SUN GEAR	39*16T*D62.55*37.5L	
	T/M	4143-315-028	SUN GEAR		
SG04	T/M	4472-377-046, ZGQA-00816	RING GEAR		
	T/M	K9005494	SUN GEAR-F	14*14*26T*234L	
SG08	T/M	K9005496	PLANET GEAR NO.1	26T*28L	
	T/M	K9005496	SUN GEAR NO.1	23*14T*20L	
CAT320 CAT320C S420LC-5	M/P		SPUR GEAR-LH	31*18T*D170.2*33L	
	M/P		SPUR GEAR-LH	31*16T*D166.9*33L	
DX380	M/P		SPUR GEAR-LH	31*16T*D170.2*33L	
	M/P		SPUR GEAR-RH	31*24T*D170.2*33L	
EC360B	M/P		SPUR GEAR-RH	32*24T*D171.8*33L	
	M/P		PLANET GEAR NO.2	21T*D70.5*30.1L	
CAT320 CAT320C S420LC-5	M/P		SUN GEAR NO.2	25T*D80.6*55.5L	
	M/P		PLANET GEAR NO.2	18T*D81.9*55L	
DX380	M/P		SUN GEAR NO.2	23T*D102.5*90.6L	
	M/P		SUN GEAR NO.2	23T*70L	
EC360B	M/P		SUN GEAR NO.2	23T*80L	
	M/P		SUN GEAR NO.2	23T*80L	
DX380	S/M	104-00043	SUN GEAR NO.1	19*20T*D87.62*94.5L	
	T/M	K9005494	PLANET GEAR NO.1	26T*28L	
EC360B	T/M	K9005496	SUN GEAR NO.1	23*14T*20L	
	T/M		PLANET GEAR NO.1	21T*D107.7*21L	
	T/M		SUN GEAR NO.1	20*14T*D104.65*24L	